



V SIMPÓSIO INTERNACIONAL DE  
**REPRODUÇÃO HUMANA  
E GENÉTICA**

---

# **Idade paterna avançada: Devemos nos preocupar?**



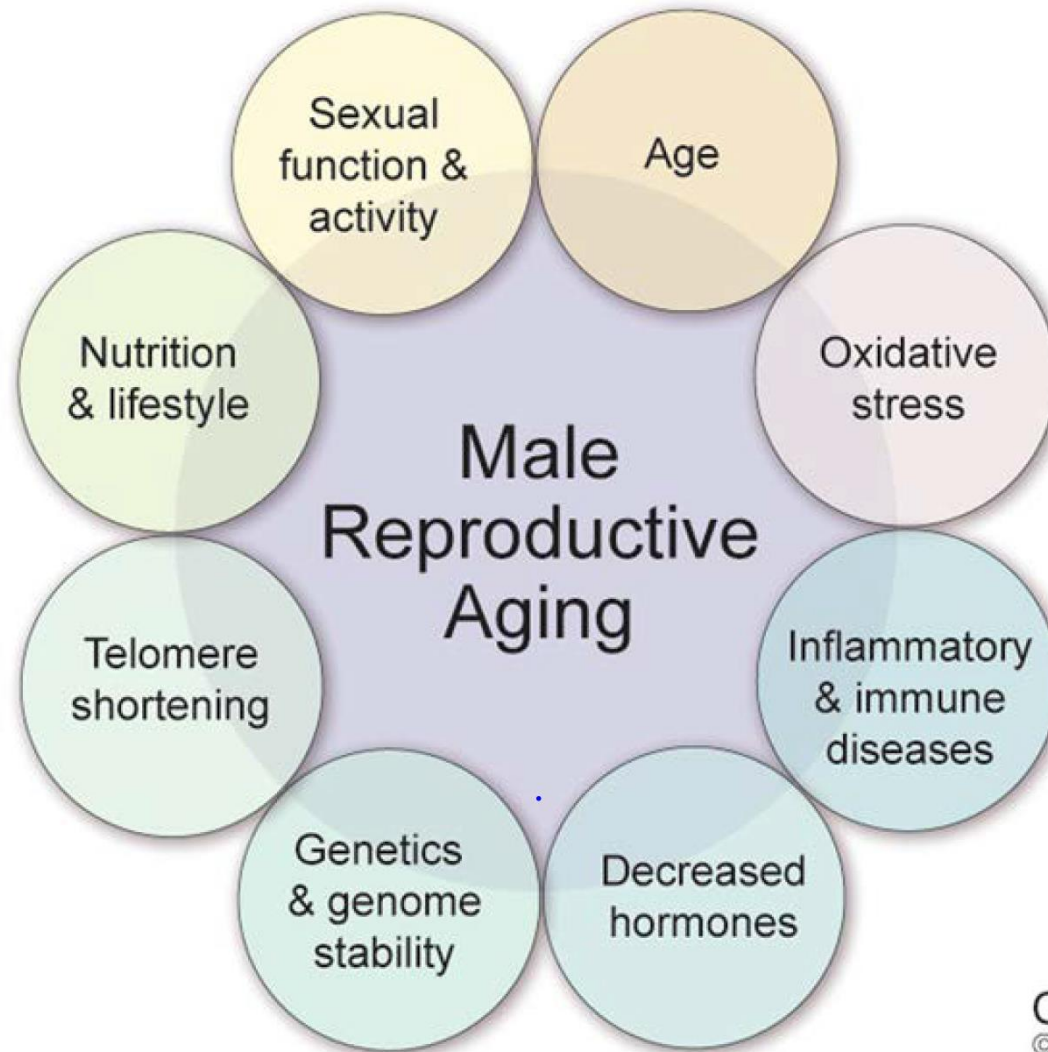
**FERTILITY**<sup>®</sup>  
MEDICAL GROUP

**Edson Borges Jr.**

**Declaro:**

**Ausência de Conflito de Interesse**

**Resolução do Conselho Federal de Medicina  
nº 1.595/2.000**



CCF  
© 2014

**Figure 1** Main factors involved in impaired male infertility due to reproductive aging.

# Differences in gametogenesis



Primordial Germ Cell

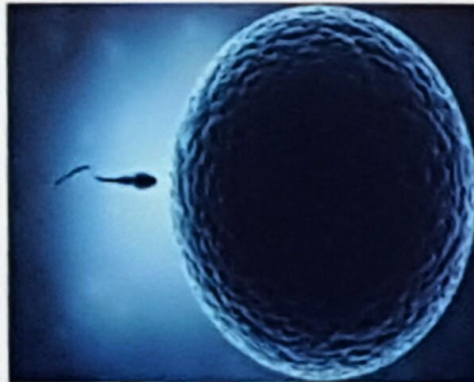
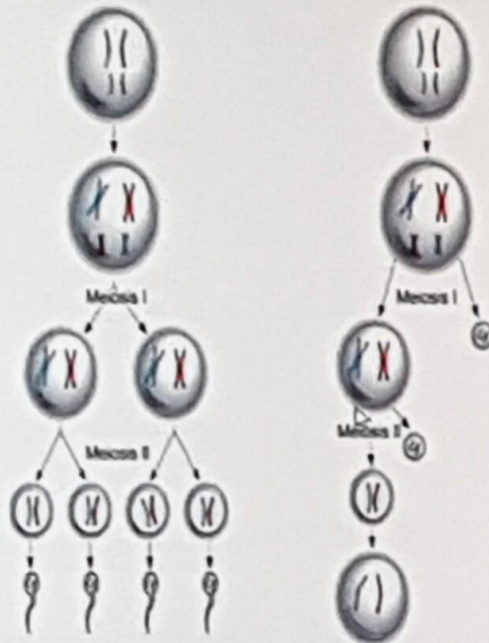
36 divisions

Puberty

23 divisions/year

25 y: 300x  
50 y: 875x  
75 y: 1450x

Sperm



Primordial Germ Cell

24 divisions

Oocyte



# Replications errors and de novo mutations

Error in DNA replication

ROS

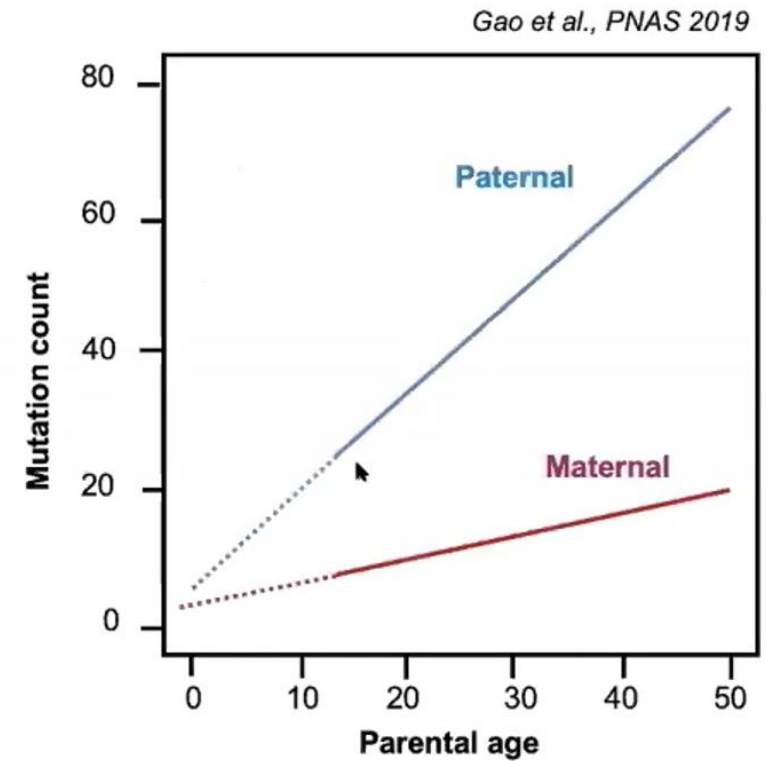
Aging

De novo mutations

Reduced Homologous  
Recombination Efficiency

Decline in DNA Repair

Additional Mutations



# AGENDA

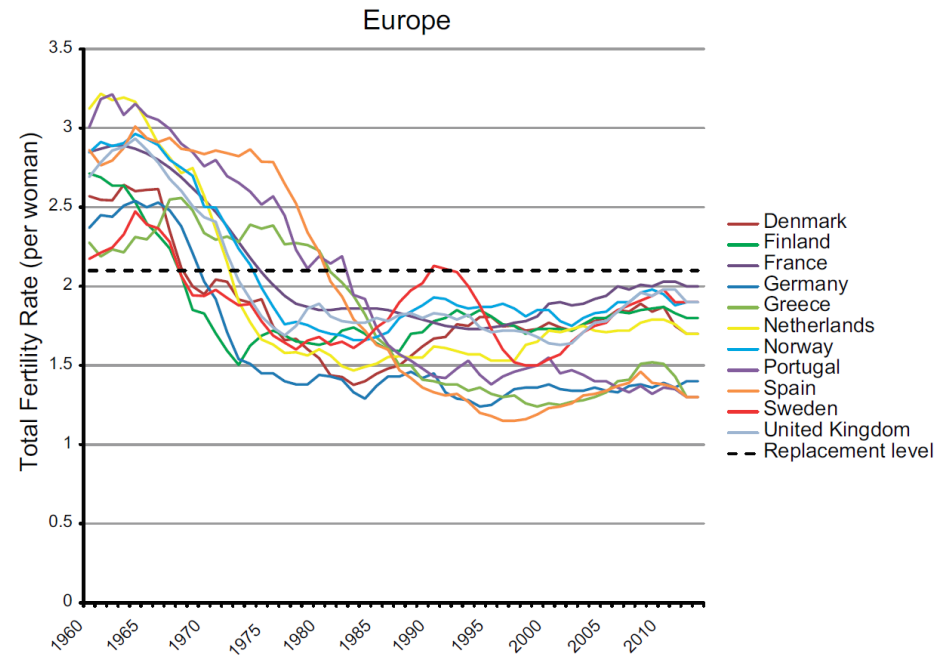
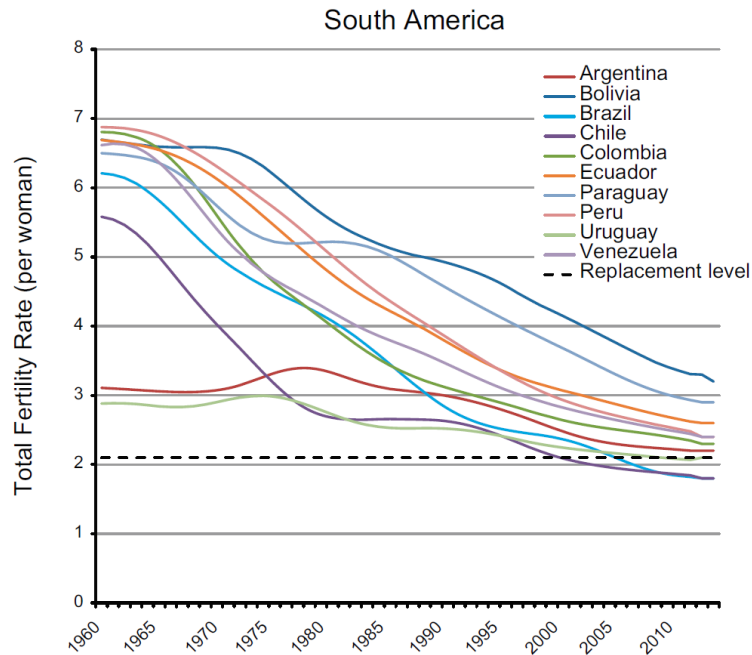
- ➔ **Fertilidade masculina – efeito temporal**
- ➔ **Nos resultados de RA**
- ➔ **Nas chances de gestação, nascimento e aborto**
- ➔ **Nos desfechos perinatas**
- ➔ **Na prole**



# MALE REPRODUCTIVE DISORDERS AND FERTILITY TRENDS: INFLUENCES OF ENVIRONMENT AND GENETIC SUSCEPTIBILITY

Niels E. Skakkebaek, Ewa Rajpert-De Meyts, Germaine M. Buck Louis, Jorma Toppari, Anna-Maria Andersson, Michael L. Eisenberg, Tina Kold Jensen, Niels Jørgensen, Shanna H. Swan, Katherine J. Sapra, Søren Ziebe, Lærke Priskorn, and Anders Juul

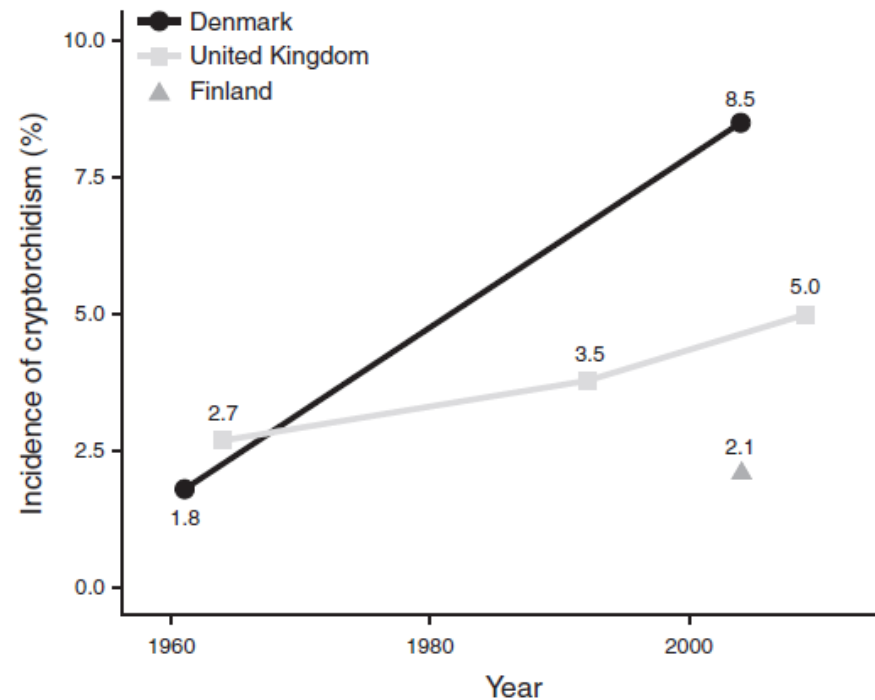
## Taxa de Fecundidade



## MALE REPRODUCTIVE DISORDERS AND FERTILITY TRENDS: INFLUENCES OF ENVIRONMENT AND GENETIC SUSCEPTIBILITY

Niels E. Skakkebaek, Ewa Rajpert-De Meyts, Germaine M. Buck Louis, Jorma Toppari, Anna-Maria Andersson, Michael L. Eisenberg, Tina Kold Jensen, Niels Jørgensen, Shanna H. Swan, Katherine J. Sapro, Søren Ziebe, Lærke Priskorn, and Anders Juul

### *Incidência de Criptorquidia*



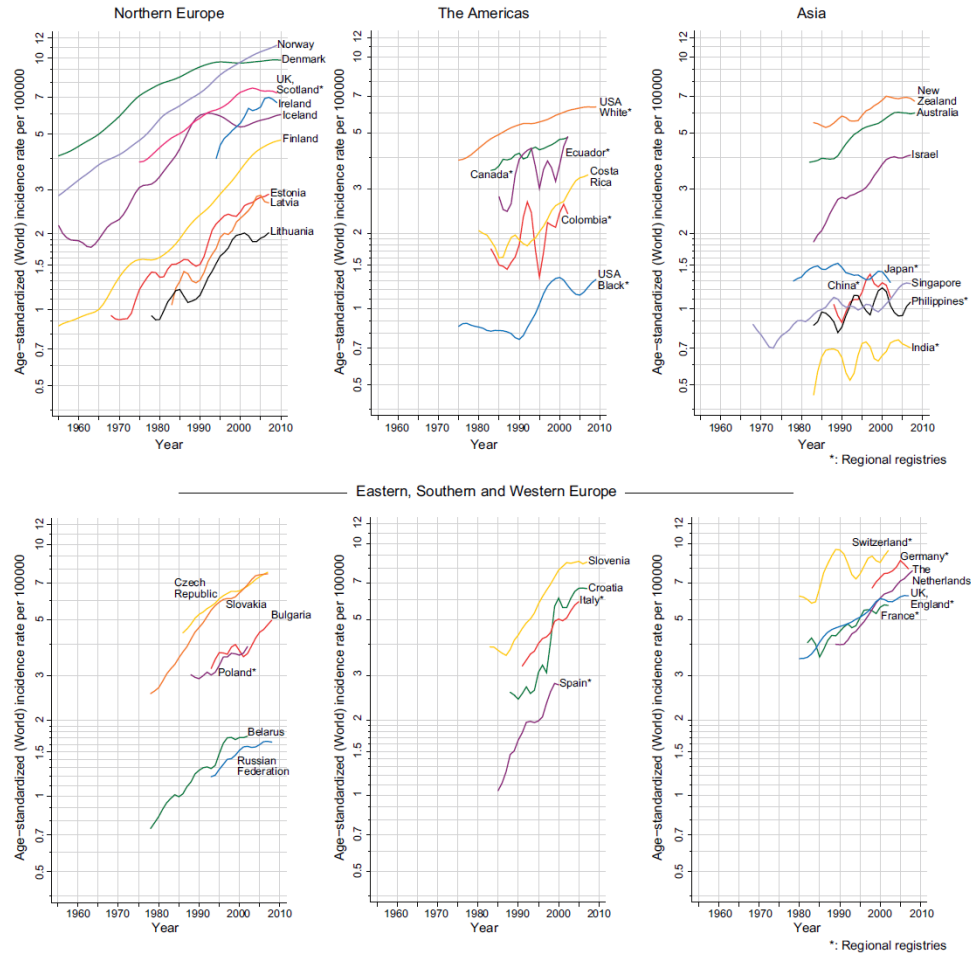
**FIGURE 7.** Incidence of cryptorchidism at birth on the basis of prospective clinical studies from the 1950s to the 2000s in Denmark, Finland, and United Kingdom. The data points are marked on the year of the publication of the study which represents the preceding incidence rate [3, 47, 61, 184, 377].



# MALE REPRODUCTIVE DISORDERS AND FERTILITY TRENDS: INFLUENCES OF ENVIRONMENT AND GENETIC SUSCEPTIBILITY

Niels E. Skakkebaek, Ewa Rajpert-De Meyts, Germaine M. Buck Louis, Jorma Toppari, Anna-Maria Andersson, Michael L. Eisenberg, Tina Kold Jensen, Niels Jørgensen, Shanna H. Swan, Katherine J. Sapro, Søren Ziebe, Lærke Priskorn, and Anders Juul

## Incidência de Câncer de Testículo



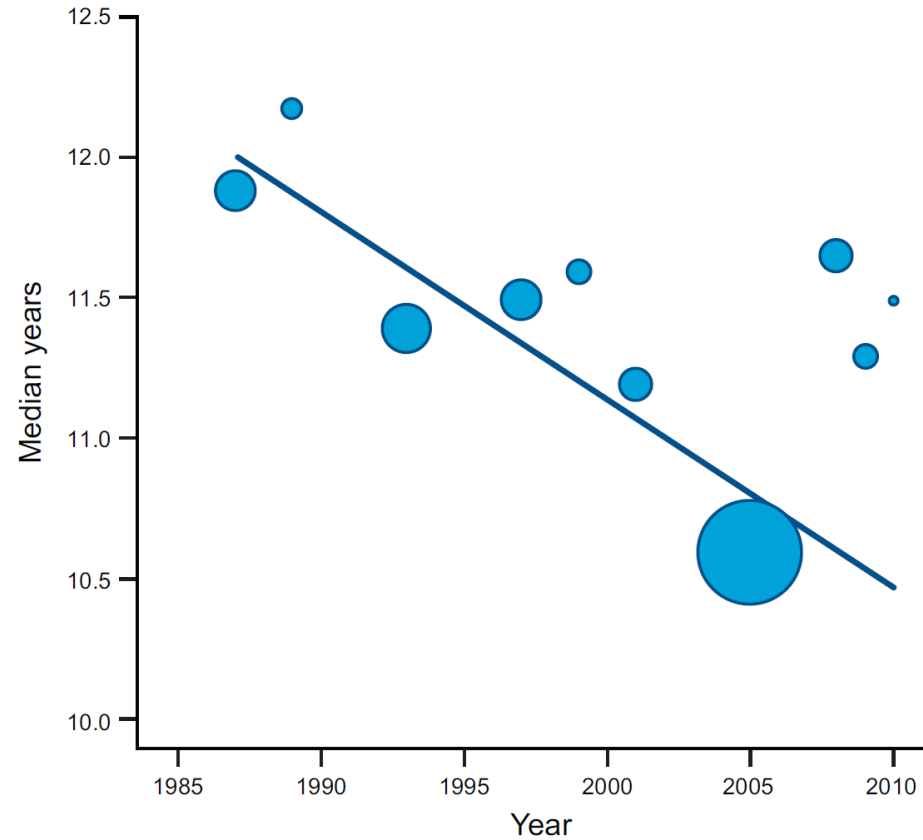
**FIGURE 4.** Trends in testicular cancer; age-standardized (world) incidence (regional or national), all ages. [Modified from Znaor et al. (481). Courtesy of Dr. Arinana Znaor and statistician Mathieu Laversanne, M.Sc., WHO, International Agency for Research in Cancer (IARC), Lyon, France.]



## MALE REPRODUCTIVE DISORDERS AND FERTILITY TRENDS: INFLUENCES OF ENVIRONMENT AND GENETIC SUSCEPTIBILITY

Niels E. Skakkebaek, Ewa Rajpert-De Meyts, Germaine M. Buck Louis, Jorma Toppari, Anna-Maria Andersson, Michael L. Eisenberg, Tina Kold Jensen, Niels Jørgensen, Shanna H. Swan, Katherine J. Sapro, Søren Ziebe, Lærke Priskorn, and Anders Juul

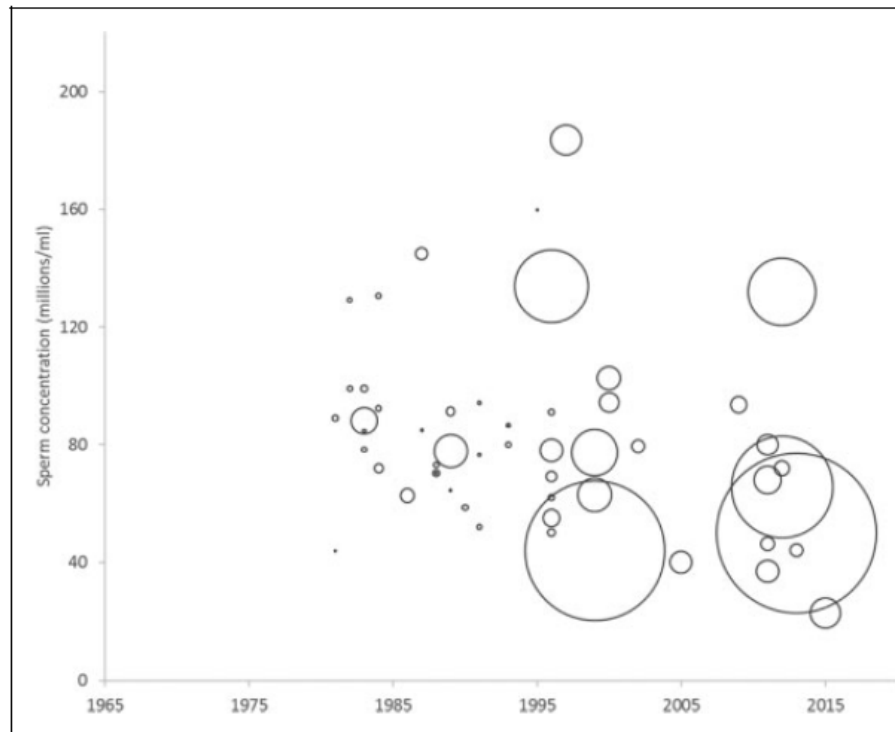
### *Idade da Puberdade*



**FIGURE 8.** Recent changes in male pubertal timing. Testicular volume was >3 ml. [From Mouritsen et al. (293).]

## Decline in sperm count in European men during the past 50 years

P Sengupta<sup>1,2</sup>, E Borges Jr<sup>3</sup>, S Dutta<sup>4</sup> and E Krajewska-Kulak<sup>2</sup>



**A time dependent decline in sperm concentration was observed from 1965 to 2015 ( $r=0.307$ ,  $p=0.02$ )**

**An overall 32.5% decrease in mean sperm concentration**

**Figure 1.** Temporal decline in sperm concentration ( $\times 10^6/\text{ml}$ ) from 1965 to 2015, bubble size corresponds to the number of men in the study.

## **Negative influence of paternal age on clinical intracytoplasmic sperm injection cycle outcomes in oligozoospermic patients**

*Renata Cristina Ferreira, M.S.,<sup>a,b</sup> Daniela Paes de Almeida Ferreira Braga, D.V.M., M.S.,<sup>a,b</sup> Tatiana Carvalho de Souza Bonetti, M.S.,<sup>a,b</sup> Fabio Firmbach Pasqualotto, M.D., Ph.D.,<sup>c</sup> Assumpto Iaconelli, Jr., M.D.,<sup>a,b</sup> and Edson Borges, Jr., M.D., Ph.D.<sup>a,b</sup>*

**Patient(s):** The study included 1,024 couples undergoing ICSI cycles with fresh spermatozoa.

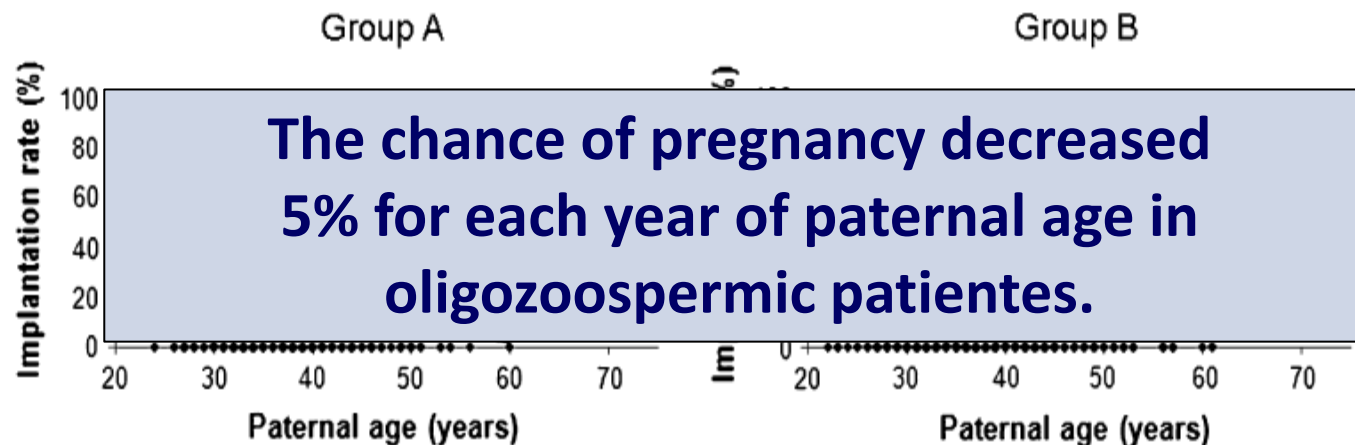
**Intervention(s):** The influence of paternal age on ICSI outcomes of oligozoospermic and normozoospermic patients was evaluated.

**Main Outcome Measure(s):** Rates of high-quality embryos, pregnancy, implantation, and miscarriage were evaluated through linear logistic regression analyses.



## FIGURE 2

Influence of paternal age on implantation rate. Multiple linear regression was performed and was adjusted for maternal age, numbers of oocytes retrieved, sperm concentration, and fertilization rate. Group A (oligozoospermic patients):  $P=.008$ ,  $RC = -0.7009$  (implantation rate regression equation: in implantation rate =  $48.2 - 0.701$  paternal age  $- 0.177$  maternal age  $- 0.220$  number of oocyte retrieved  $- 0.092$  sperm concentration  $+ 0.082$  fertilization rate); group B (normozoospermic patients):  $P=.752$ ,  $RC = 0.0566$  (implantation rate regression equation: in implantation rate =  $32.1 + 0.057$  paternal age  $- 0.758$  maternal age  $+ 0.426$  number of oocyte retrieved  $- 0.024$  sperm concentration  $+ 0.0542$  fertilization rate).



Ferreira. Paternal age and ICSI outcomes. *Fertil Steril* 2009.

Received: 31 March 2021 | Revised: 29 July 2021 | Accepted: 30 July 2021

DOI: 10.1111/and.14211

ORIGINAL ARTICLE

First International Journal of Andrology  
**andrologia** WILEY

# Early and late paternal contribution to cell division of embryos in a time-lapse imaging incubation system

Amanda Souza Setti<sup>1,2</sup>  | Daniela Paes de Almeida Ferreira Braga<sup>1,2</sup> | Livia Vingris<sup>3</sup> |  
Assumpto Iaconelli Jr.<sup>2,4</sup> | Edson Borges Jr.<sup>2,4</sup>

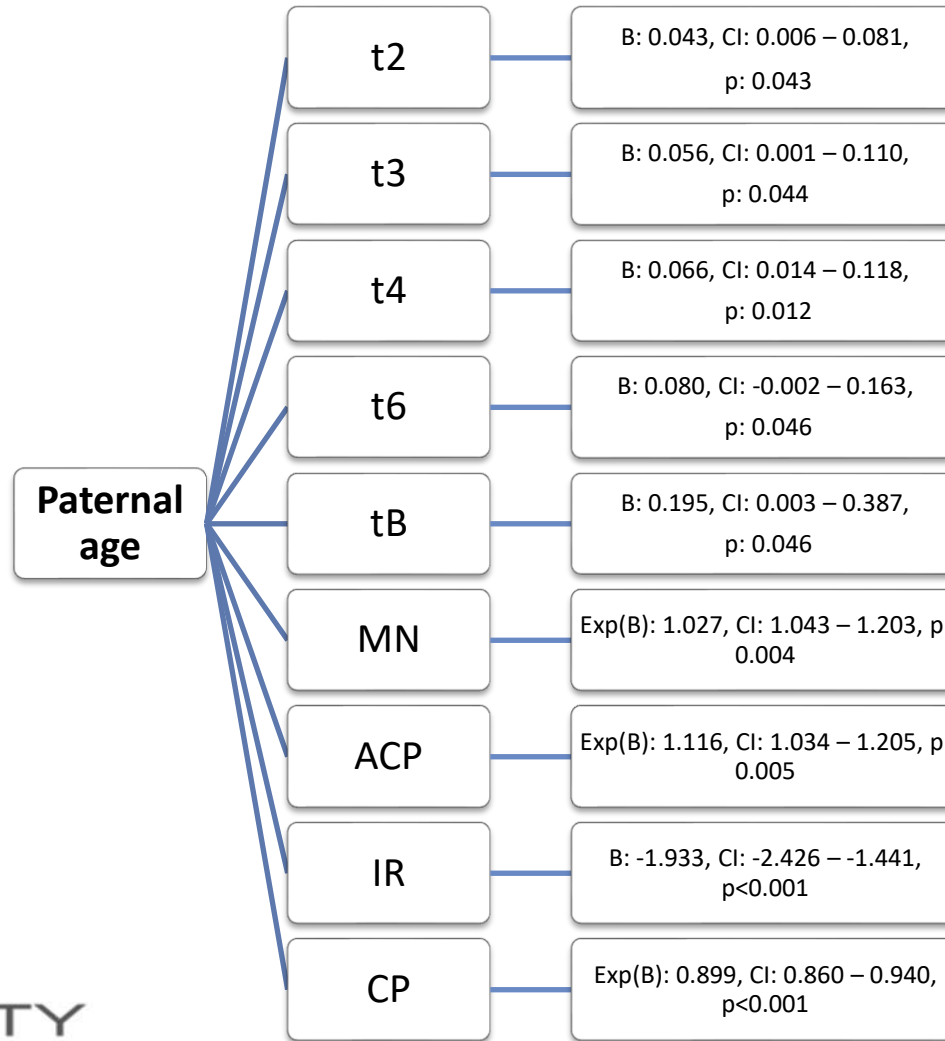
# RESULTS

Variable	Mean $\pm$ SD
<b>Semen analysis</b>	
Male age (years)	41.3 $\pm$ 6.8
Ejaculatory abstinence length (days)	3.2 $\pm$ 2.5





# RESULTS



Received: 14 February 2022

Revised: 20 April 2022


Accepted: 9 May 2022

DOI: 10.1111/and.14485

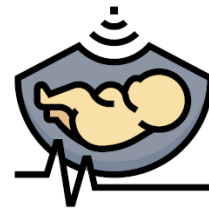
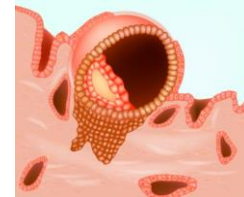
ORIGINAL ARTICLE

First International Journal of Andrology  
**andrologia** WILEY

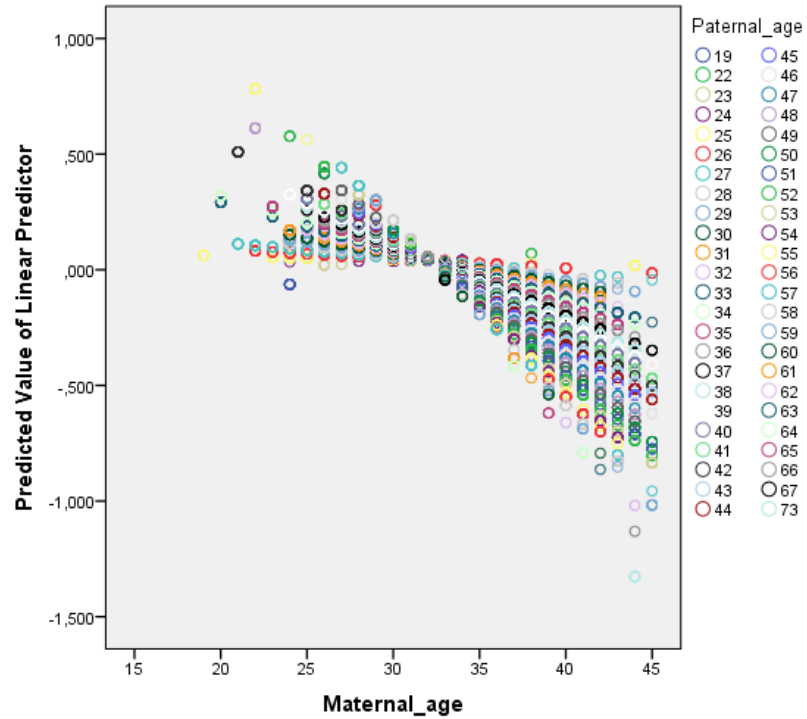
# Paternal ageing impacts blastulation and the outcomes of pregnancy at different levels of maternal age: A clustering analysis of 21,960 oocytes and 3837 ICSI cycles

Amanda Souza Setti<sup>1,2</sup>  | Daniela Paes de Almeida Ferreira Braga<sup>1,2</sup> |  
Patricia Guilherme<sup>1</sup> | Livia Vingris<sup>1</sup> | Assumpto Iaconelli Jr<sup>1,2</sup> | Edson Borges Jr<sup>1,2</sup>

Variable	Value (n=3837)
Female age (y-old)	35.3 ± 4.5
Female BMI	24.2 ± 3.9
Male age (y-old)	38.0 ± 6.4

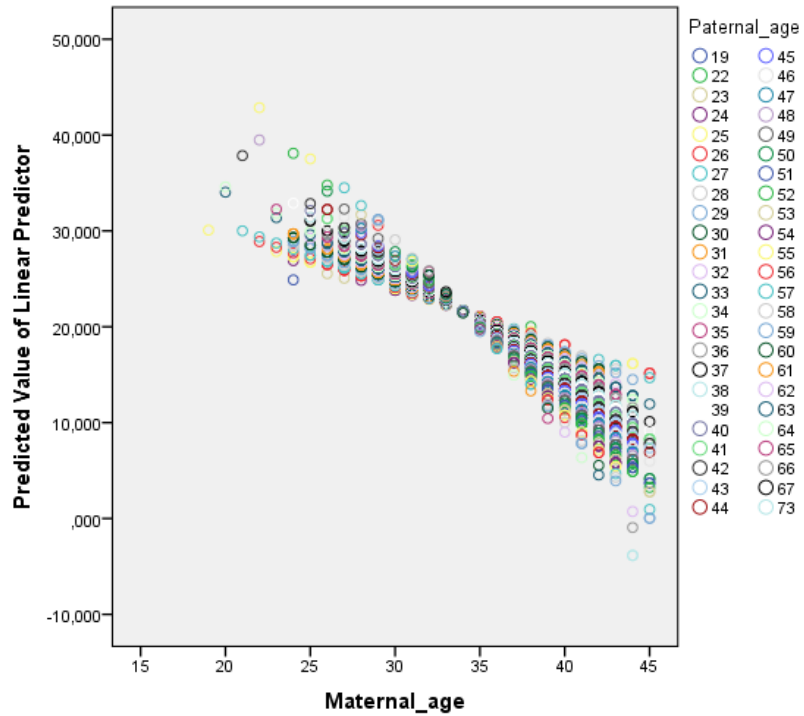


Dependent variable	B	OR	CI	p-value
Blastocyst development	- 0.005	0.995	0.994 – 0.996	< 0.001

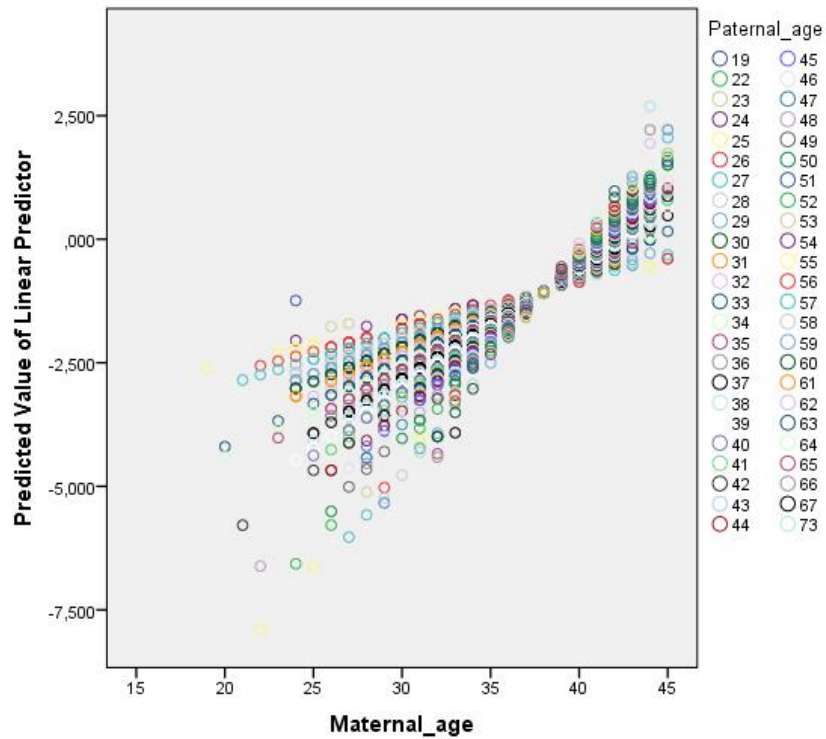


0.000000

Dependent variable	B	OR	CI	p-value
Implantation rate	- 0.041	0.960	0.947 – 0.973	< 0.001



Dependent variable	B	OR	CI	p-value
Miscarriage rate	0.011	1.012	1.005 – 1.018	0.001

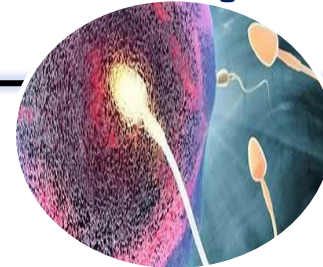


For every **1-year increase in paternal age**, the odds ratio of live-birth reduces by:

- **1%** in females aged 37 years,
- **1.6%** in those aged 38 years,
- **2.4%** in 39-year-old females,
- **5%** in 42-year-old females and so on.



**X Misleading concept**





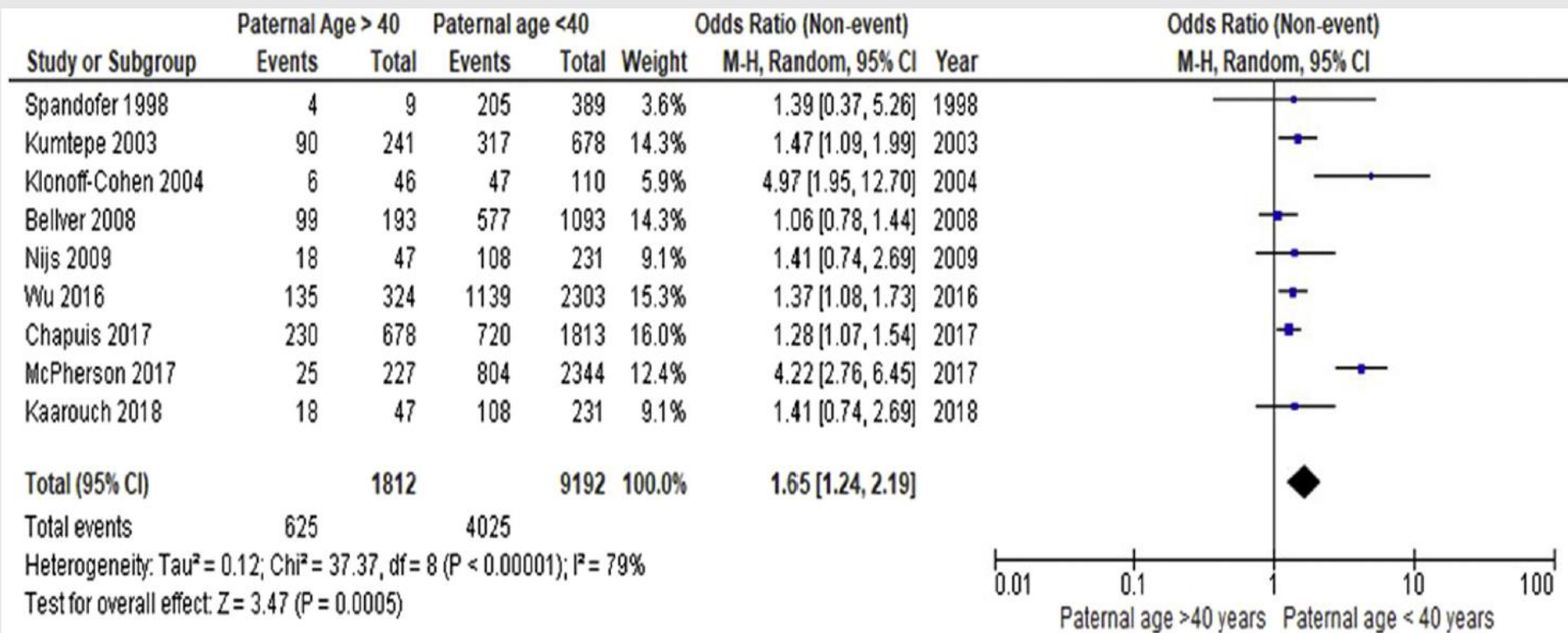
# Effect of paternal age on outcomes in assisted reproductive technology cycles: systematic review and meta-analysis

Guy Morris, M.B.Ch.B. (Honours), M.R.C.O.G.,<sup>a,b</sup> Dimitrios Mavrelos, M.D., M.R.C.O.G.,<sup>a,b</sup> Efsthios Theodorou, M.R.C.O.G.,<sup>a</sup> Mia Campbell-Forde, B.Sc., M.Sc.,<sup>a</sup> David Cansfield, B.Sc. (Hons), M.Res.,<sup>a</sup> Ephraim Yasmin, M.D., M.R.C.O.G.,<sup>a,b</sup> Philippa Sangster, M.Sc., F.R.C.S. (Urol),<sup>a,b</sup> Wael Saab, M.D., M.R.C.O.G.,<sup>a</sup> Paul Serhal, F.R.C.O.G.,<sup>a</sup> and Srividya Seshadri, M.D., M.Sc., M.R.C.O.G.<sup>a</sup>

<sup>a</sup> Centre for Reproductive and Genetic Health, London, United Kingdom; and <sup>b</sup> Reproductive Medicine Unit, University College London Hospitals National Health Service Foundation Trust, London, United Kingdom

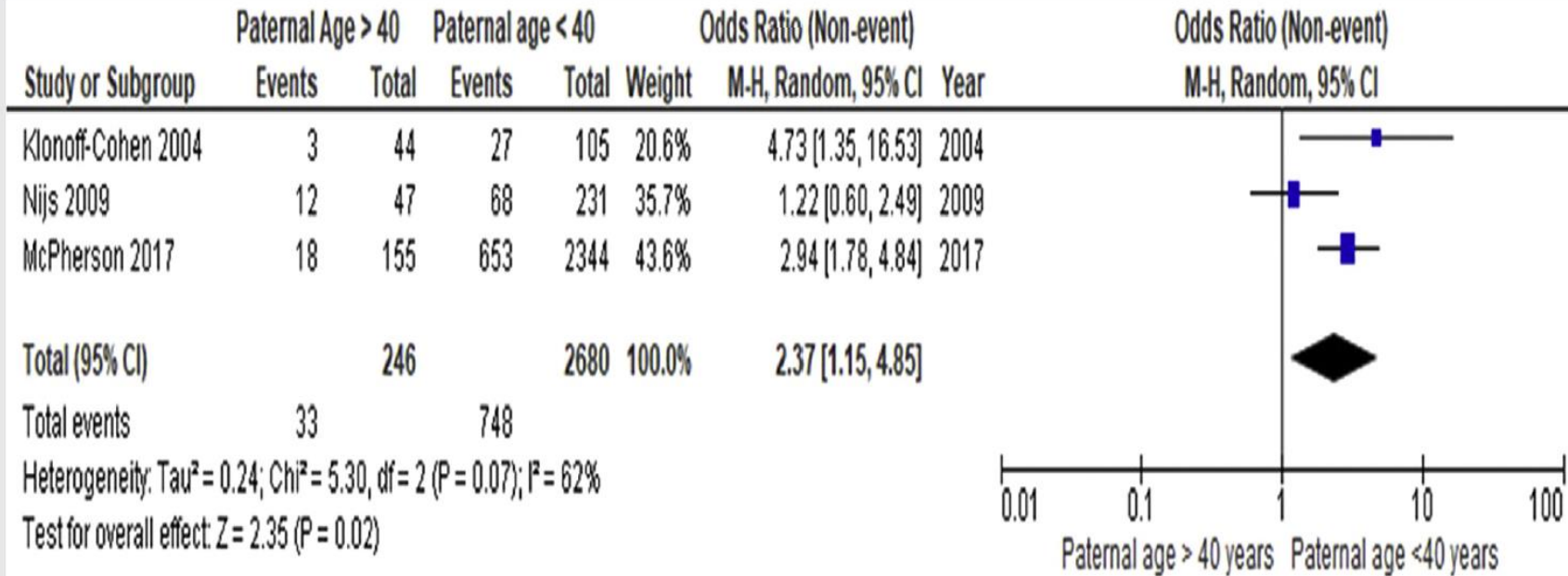
Fertil Steril Rev 2020;1:16–34. 2020

- ➔ Live birth rate was reported in three autologous oocyte studies (2,926 cycles) and five donor oocyte studies (7,648 cycles).



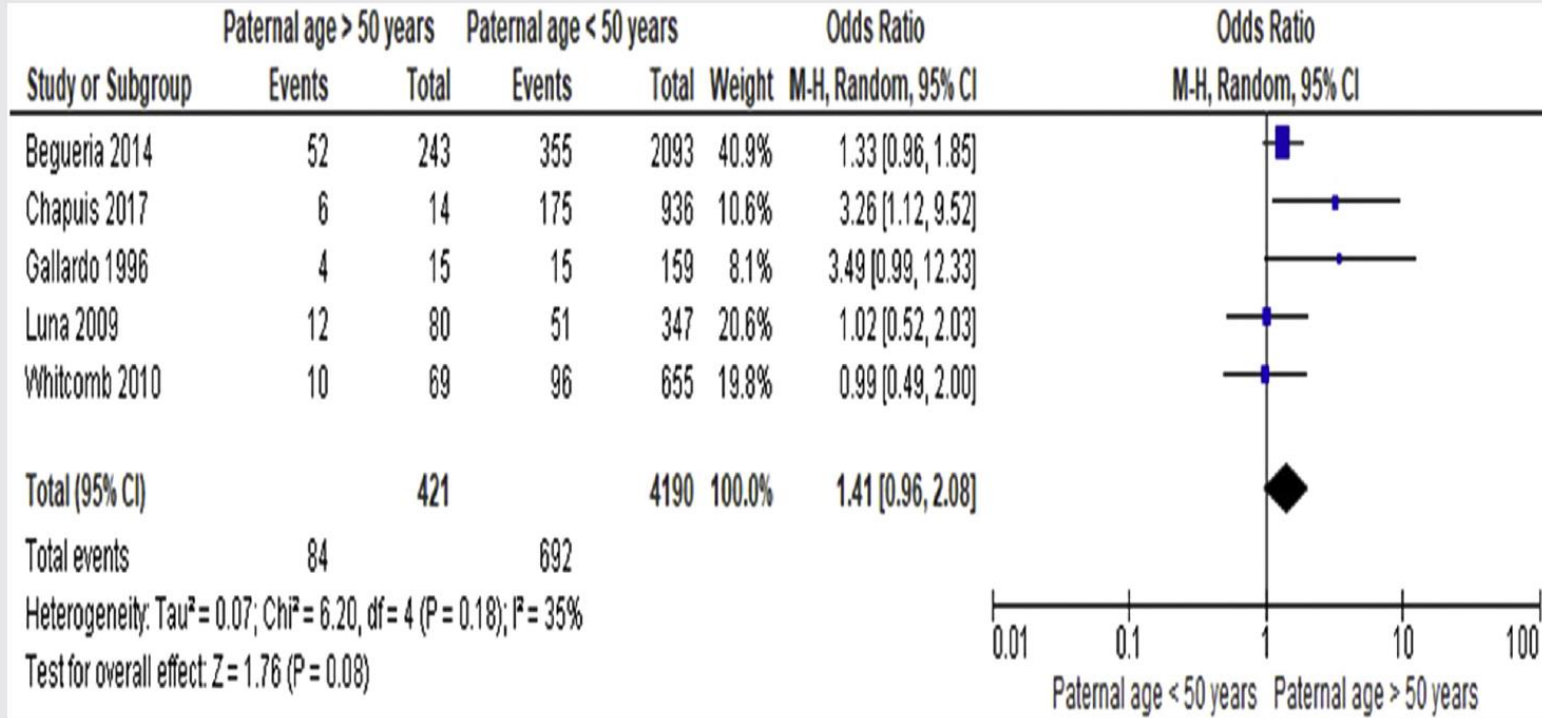
Effect of paternal age on clinical pregnancy rate (CPR). Autologous oocytes. CI = confidence interval; M-H = Mantel-Haenszel.

Morris. Paternal age and ART: is there an effect? *Fertil Steril Rev* 2020.



Effect of paternal age on live birth rate (LBR). Autologous oocytes. CI = confidence interval; M-H = Mantel-Haenszel.

Morris. Paternal age and ART: is there an effect? *Fertil Steril Rev* 2020.



Effect of paternal age >50 years on miscarriage rate (MR). Donor oocytes. CI = confidence interval; M-H = Mantel-Haenszel.

Morris. Paternal age and ART: is there an effect? *Fertil Steril Rev* 2020.

- 1188 ciclos ICSI
- mulheres de até 35 anos
- boa reserva ovariana e sem fator uterino
- concentração espermática > 1 milhão/ml

**Tabela 2. Taxas de nascidos vivos e valor de p da comparação entre os grupos**

Grupos	Taxa de nascidos vivos	p
<35	55,71%	
36-40	50,92%	0.41
41-45	59,78%	0.69
46-50	50,00%	0.72
>51	52,94%	0.90

## Increasing paternal age and ejaculatory abstinence length negatively influence the intracytoplasmic sperm injection outcomes from egg-sharing donation cycles

Amanda S. Setti<sup>1,2</sup> | Daniela Paes Almeida Ferreira Braga<sup>1,2</sup>  |  
Assumpto Iaconelli Junior<sup>1,2</sup> | Edson Borges Junior<sup>1,2</sup>

Paternal variable	Fertilization (%)	D3 high-quality embryos (%)	D3 normal embryo development (%)	Blastocyst development (%)	High-quality blastocysts (%)	Implantation (%)	Pregnancy chance	Miscarriage chance	Live birth chance
<b>Age</b>									
B	-0.276	-0.040	-2.750	-0.070	-44.058	-0.060	Exp(B) 0.664	Exp(B) 1.019	Exp(B) 0.812
SE	0.085	0.017	0.8625	0.035	20.248	0.007	0.187	0.052	0.100
CI	-0.44 to -0.11	-0.07 to -0.01	-4.44 to -1.06	-0.14 to -0.002	-84.07 to -4.05	-0.08 to -0.05	0.457 to 0.967	0.918 to 1.131	0.665 to 0.991
<b>P</b>	<b>.001</b>	<b>.021</b>	<b>.001</b>	<b>.043</b>	<b>.031</b>	<b>&lt;.001</b>	<b>.033</b>	<b>.718</b>	<b>.041</b>
<b>EA</b>									
B	-0.083	-0.003	-0.300	-0.589	13.8125	-0.012	Exp(B) 0.051	Exp(B) 0.861	Exp(B) 0.169
SE	0.847	0.015	0.014	0.243	88.143	0.003	1.803	0.190	1.195
CI	-0.44 to -0.11	-0.01 to -0.001	-0.06 to -0.02	-1.07 to -0.11	-160.34 to 187.97	-0.20 to -0.35	0.001 to 1.870	0.589 to 1.258	0.015 to 1.851
<b>P</b>	<b>.765</b>	<b>.028</b>	<b>.036</b>	<b>.016</b>	<b>.876</b>	<b>&lt;.001</b>	<b>.103</b>	<b>.435</b>	<b>.142</b>

# Is increasing paternal age negatively associated with donor oocyte recipient success? A paired analysis using sibling oocytes

Kelly McCarter, M.D.,<sup>a</sup> Robert Setton, M.D.,<sup>b</sup> Alice Chung, B.A.,<sup>b</sup> Anjile An, M.P.H.,<sup>c</sup> Zev Rosenwaks, M.D.,<sup>b</sup> and Steven Spandorfer, M.D.<sup>b</sup>

Fertil Steril 2021;116:373–9. 2021

Supplemental Table 1. Odds ratio and 95% confidence interval for pregnancy

	OR	95% CI	p-value
<b>Partner Age Group</b>			
< 45	—	—	
>= 45	0.35	0.13, 0.95	<b>0.04</b>
<b>Parous</b>			
Yes	—	—	
No	4.59	1.47, 14.4	<b>0.009</b>
<b>Sperm</b>			
Fresh	—	—	
Frozen	10.4	0.43, 251	0.15





# Influence of paternal age on assisted reproductive technology cycles and perinatal outcomes

Audrey M. Marsidi, M.D.,<sup>a</sup> Lauren M. Kipling, M.P.H.,<sup>b</sup> Jennifer F. Kawwass, M.D.,<sup>a</sup> and Akanksha Mehta, M.D.<sup>c</sup>

<sup>a</sup> Division of Reproductive Endocrinology and Infertility, Department of Gynecology and Obstetrics, Emory Reproductive Center, Atlanta, Georgia; <sup>b</sup> Department of Epidemiology, Emory University Rollins School of Public Health, Atlanta, Georgia; and <sup>c</sup> Department of Urology, Emory University School of Medicine, Atlanta, Georgia

Fertil Steril 2021;116:380-7

- ➔ 77,209 fresh nondonor cycles
- ➔ Compared with paternal age  $\leq 45$  years, paternal age  $\geq 46$  years was associated with:
  - **a lower likelihood of pregnancy per cycle** (adjusted risk ratio [aRR] 0.81; 95% confidence interval [CI] 0.76–0.87) and per transfer (aRR 0.85; 95% CI 0.81–0.90);
  - **a lower likelihood of live birth per cycle** (aRR 0.76; 95% CI 0.72–0.84) **and per transfer** (aRR 0.82; 95% CI 0.77–0.88), (after controlling for maternal age and other confounders).

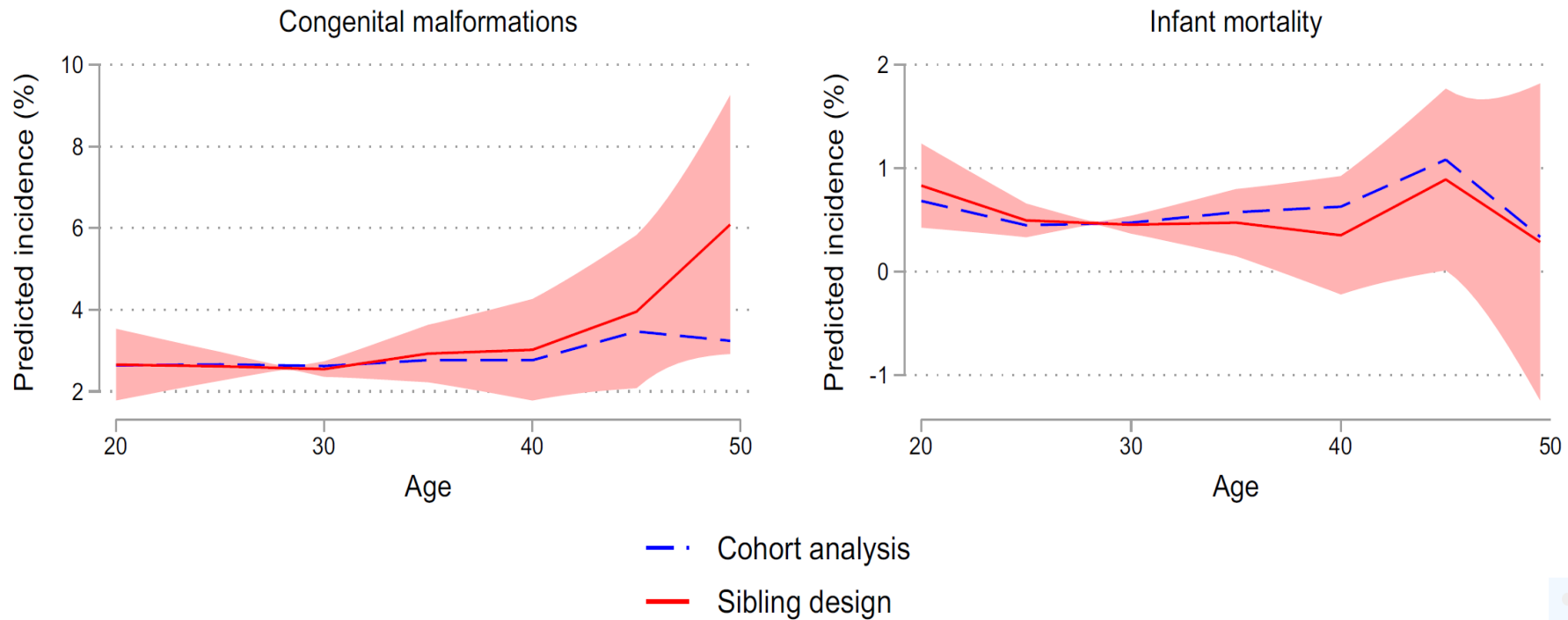




## Parental age and birth defects: a sibling study

Hans K. Hvide<sup>1,2,3</sup> · Julian Johnsen<sup>4</sup> · Kjell G. Salvanes<sup>2,5,6,7,8</sup>

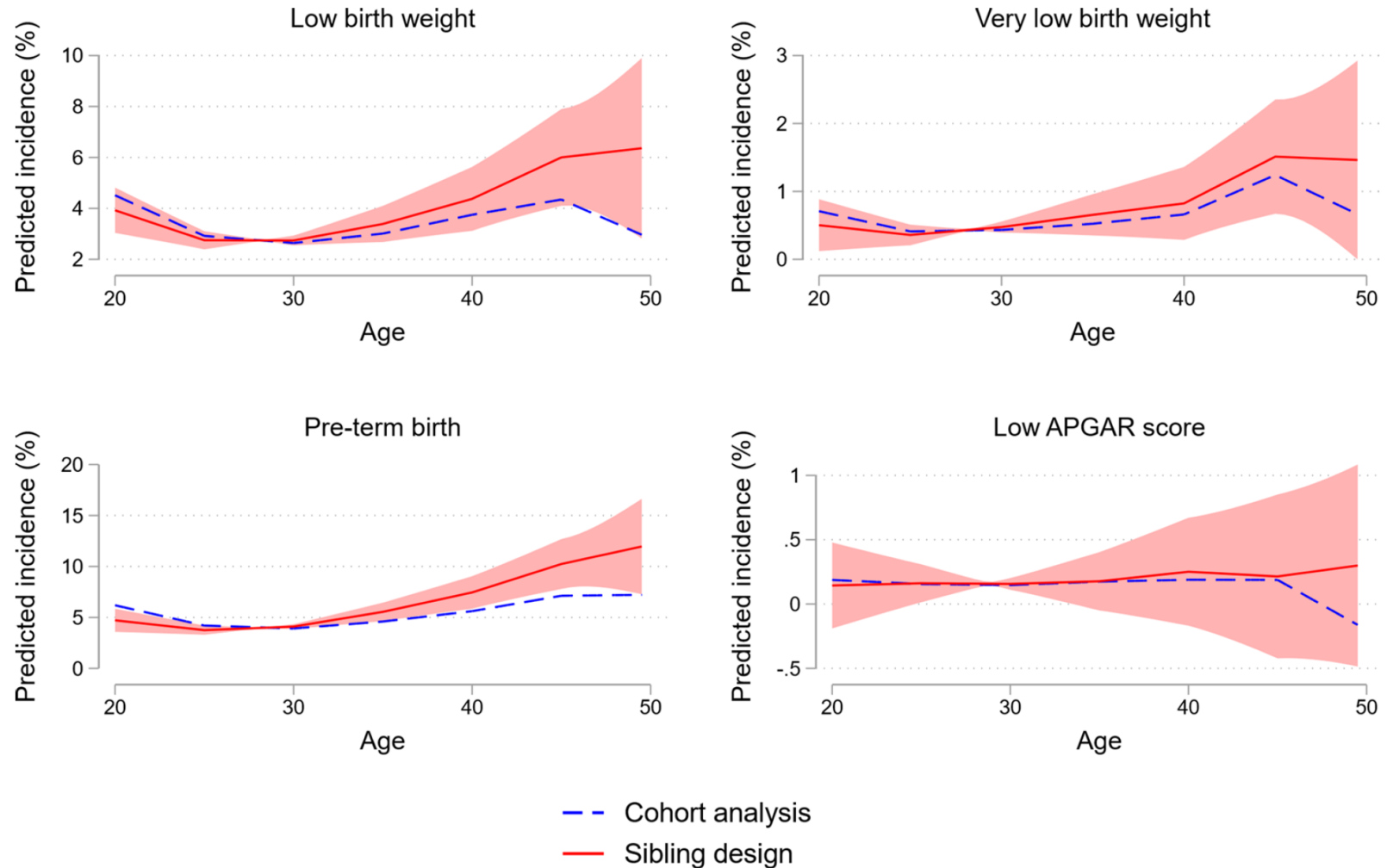
Panel B. Regression spline





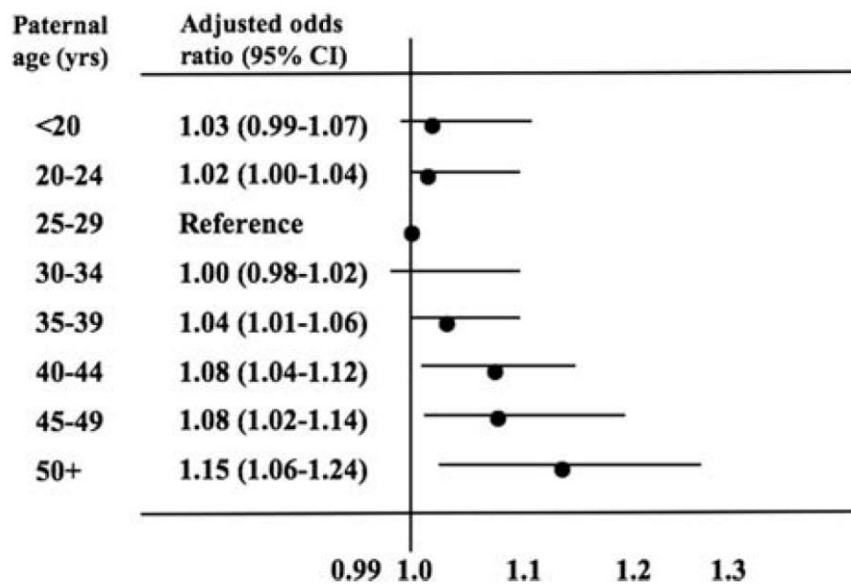
## Parental age and birth defects: a sibling study

Hans K. Hvide<sup>1,2,3</sup> · Julian Johnsen<sup>4</sup> · Kjell G. Salvanes<sup>2,5,6,7,8</sup>



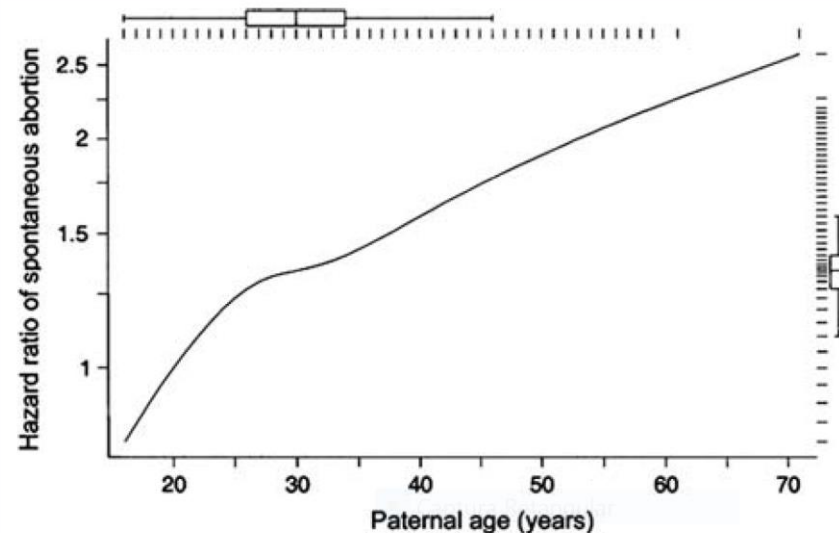
## Paternal age and reproduction

Gideon A. Sartorius<sup>1,2</sup> and Eberhard Nieschlag<sup>1,3</sup>



**Figure 4** Relative risk of birth defects depending on paternal age.

Retrospective analysis of 5 213 248 subjects in the USA. Increased risk for heart defects, circulatory/respiratory defects, diaphragmatic hernia, tracheo-oesophageal fistulas, musculo-skeletal anomalies (data extracted from Yang *et al.*, 2007).



**Figure 3** Hazard ratios of spontaneous miscarriages between 6 and 20 weeks according to paternal age adjusted for different confounders including maternal age (using prospective data from 5121 Californian women, men aged 20 years as referent).

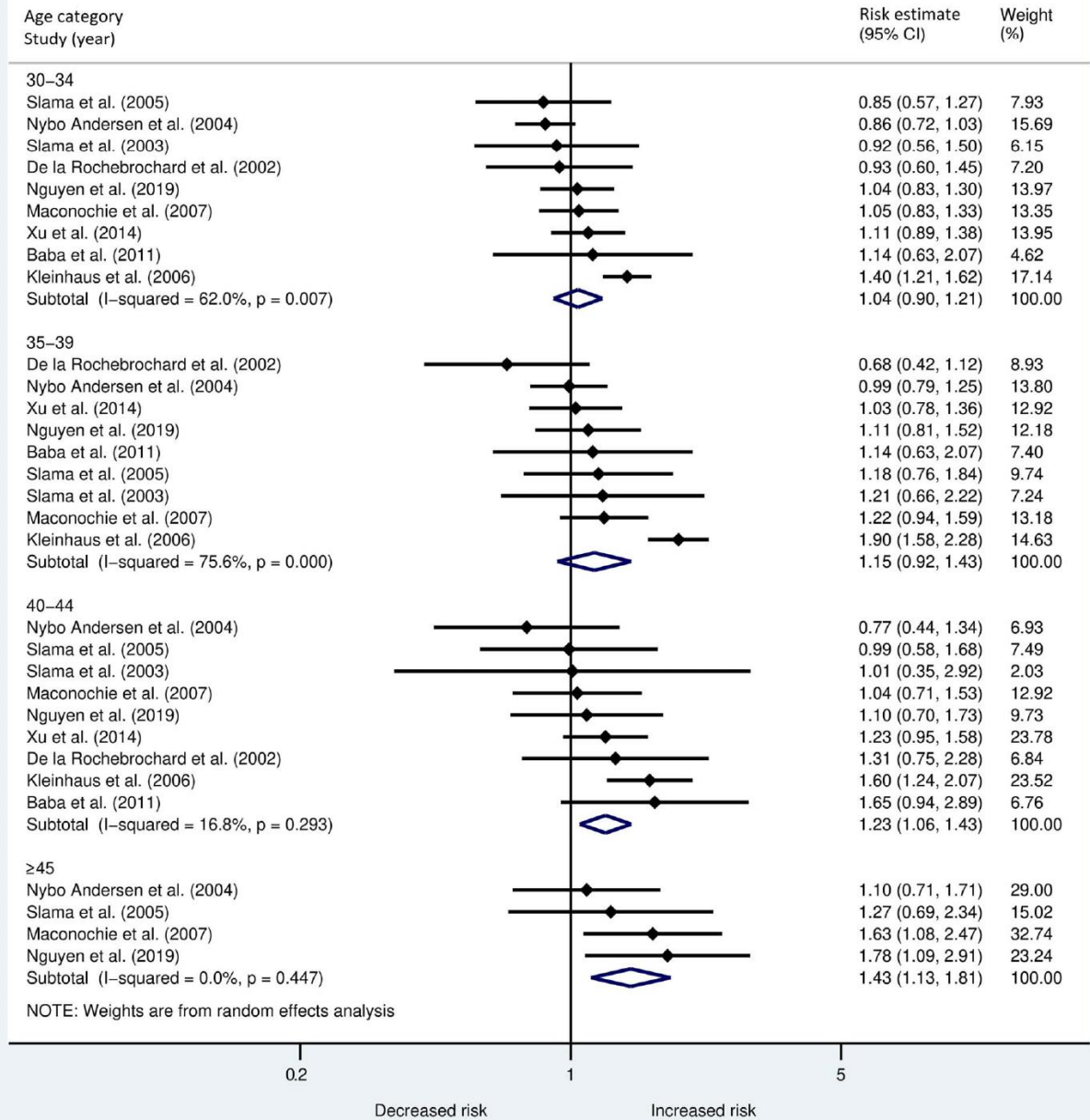
Boxplots along the top and right side indicate data distribution according to each axis (with permission from Slama *et al.*, 2005).

## Advanced paternal age is associated with an increased risk of spontaneous miscarriage: a systematic review and meta-analysis

Nadia A. du Fossé<sup>1,\*</sup>, Marie-Louise P. van der Hoorn<sup>1</sup>,  
 Jan M.M. van Lith<sup>1</sup>, Saskia le Cessie<sup>2,3</sup>, and Eileen E.L.O. Lashley<sup>1</sup>


Pooled risk estimates for miscarriage for age categories 30–34, 35–39, 40–44 and ≥45 years of age were:

- 1.04 (95% CI 0.90,1.21),
  - 1.15 (0.92, 1.43),
  - 1.23 (1.06, 1.43),
  - 1.43 (1.13, 1.81)
- respectively (reference category 25–29 years)



**Figure 2** Forest plot describing the association between paternal age in different age categories and the risk of miscarriage <20 weeks.

# The effect of paternal factors on perinatal and paediatric outcomes: a systematic review and meta-analysis

**Nan B. Oldereid** <sup>1,\*</sup>, **Ulla-Britt Wennerholm**<sup>2</sup>, **Anja Pinborg**<sup>3</sup>,  
**Anne Loft**<sup>4</sup>, **Hannele Laivuori**<sup>5,6,7,8</sup>, **Max Petzold**<sup>9</sup>,  
**Liv Bente Romundstad**<sup>10,11</sup>, **Viveca Söderström-Anttila**<sup>12</sup>,  
and **Christina Bergh**<sup>13</sup>

<sup>1</sup>Livio IVF-klinikken Oslo, Sørkedalsveien 10A, 0369 Oslo, Norway <sup>2</sup>Department of Obstetrics and Gynaecology, Institute of Clinical Sciences, Sahlgrenska Academy, Gothenburg University, Sahlgrenska University Hospital East, SE 416 85 Gothenburg, Sweden <sup>3</sup>Department of Obstetrics and Gynecology, Hvidovre Hospital, Institute of Clinical Medicine, Copenhagen University Hospital, Copenhagen, Denmark <sup>4</sup>Fertility Clinic, Section 4071, Copenhagen University Hospital, Rigshospitalet, Blegdamsvej 9, DK-2100 Copenhagen, Denmark <sup>5</sup>Department of Obstetrics and Gynecology, Tampere University Hospital, Teiskontie 35, FI-33521 Tampere, Finland <sup>6</sup>Faculty of Medicine and Life Sciences, University of Tampere, Arvo Ylpön katu 34, FI-33520 Tampere, Finland <sup>7</sup>Medical and Clinical Genetics, University of Helsinki and Helsinki University Hospital, Haartmaninkatu 8, FI-00290 Helsinki, Finland <sup>8</sup>Institute for Molecular Medicine Finland, Helsinki Institute of Life Science, University of Helsinki, Tukhomankatu 8, FI-00290 Helsinki, Finland <sup>9</sup>Swedish National Data Service and Health Metrics Unit, University of Gothenburg, 405 30 Gothenburg, Sweden <sup>10</sup>Spiren Fertility Clinic, Norwegian University of Science and Technology, Trondheim NO-7010, Norway <sup>11</sup>Department of Public Health, Norwegian University of Science and Technology, Trondheim, Norway <sup>12</sup>Mehiläinen Felicitas, Mannerheimintie 20A, 00100 Helsinki, Finland <sup>13</sup>Department of Obstetrics and Gynaecology, Institute of Clinical Sciences, Sahlgrenska Academy, Gothenburg University, Reproductive Medicine, Sahlgrenska University Hospital, SE-413 45 Gothenburg, Sweden

→ 14.371 artigos, 238 incluídos, 81 para a meta-análise

→ Idade, estilo de vida, peso, altura, gordura corporal, cigarro





**Table XI Summary results of the meta-analyses of the association between paternal factors and perinatal and paediatric outcomes.**

Exposure	Outcome	Pooled estimate (with 95% CI)	Certainty of evidence GRADE
Paternal age	PTB	1.02 (1.00–1.05)	⊕⊕○○
	Low BW	1.00 (0.97–1.03)	⊕⊕○○
	Stillbirth	1.19 (1.10–1.30)	⊕⊕○○
	★ Children with any birth defects	1.05 (1.02–1.07)	⊕⊕⊕○
	★ CHDs	1.03 (0.99–1.06)	⊕⊕⊕○
	Orofacial clefts	0.99 (0.95–1.04)	⊕⊕○○
		1.14 (1.02–1.29)*	
	★ Gastroschisis	0.88 (0.78–1.00)	⊕⊕⊕○
	★ Spina bifida	0.97 (0.90–1.04)	⊕⊕⊕○
	★ Trisomy 21	1.13 (1.05–1.23)	⊕⊕⊕○
	★ Acute lymphoblastic leukaemia	1.08 (0.96–1.21)	⊕⊕⊕○
	★ Autism and ASDs	1.25 (1.20–1.30)	⊕⊕⊕○
★ Schizophrenia	1.31 (1.23–1.38)	⊕⊕⊕○	
Paternal BMI	No meta-analysis		
Paternal smoking	PTB	1.16 (1.00–1.35)	⊕⊕○○
	Low BW	1.10 (1.00–1.21)	⊕⊕○○
	SGA	1.22 (1.03–1.44)	⊕⊕○○
	CHDs	1.75 (1.25–2.44)	⊕⊕○○
	Orofacial clefts	1.51 (1.16–1.97)	⊕⊕○○
	Brain tumours	1.12 (1.03–1.22)	⊕⊕○○



\*Exposure: Paternal age >45 years.



# Is advanced paternal age a health risk for the offspring?

Anne-Marie Nybo Andersen, M.D., Ph.D. and Stine Kjaer Urhoj, M.Sc.  
Department of Public Health, University of Copenhagen, Copenhagen, Denmark

**Adverse health outcomes in offspring probably affected by advanced paternal age, their occurrence, and assessed evidence for the paternal age effect (strong/medium/weak).**

Adverse health condition	Population-based prevalence/lifetime risk	Evidence for a paternal age effect
Fetal death <sup>a</sup>		
Miscarriage (early fetal death)	1,500/10,000 clinically recognized pregnancies	Weak
Stillbirth (late fetal death)	0.4/10,000 births	Medium
Congenital syndromes and anomalies <sup>b</sup>		
Achondroplasia	<1/10,000 births	Strong
Thanatophoric dysplasia	<1/10,000 births	Strong
Osteogenesis imperfecta	<1/10,000 births	Strong
Apert syndrome	<1/10,000 births	Strong
Pfeiffer's syndrome	<1/10,000 births	Strong
Crouzon's syndrome	<1/10,000 births	Strong
Marfan syndrome	2/10,000 births	Strong
Neurofibromatosis (NF-1)	3/10,000 births	Strong
Syndactyly	5/10,000 births	Medium
Cleft palate	15/10,000 births	Strong
Patent ductus arteriosus	5/10,000 births (term babies)	Medium-weak
Down syndrome	5/10,000 births <sup>c</sup>	Weak
Club foot	15/10,000 births	Weak
Other perinatal conditions <sup>a</sup>		
Preterm birth	700/10,000 births	Medium
Preeclampsia	300/10,000 births	Weak
Childhood cancers <sup>a</sup>		
Retinoblastoma	0.6/10,000 individuals	Medium
Acute lymphatic leukemia	12/10,000 individuals	Strong
Neurodevelopmental outcomes <sup>d</sup>		
Autism spectrum disorders	93/10,000 individuals	Strong
Schizophrenia/psychosis	367/10,000 individuals	Strong
Attention deficit-hyperactivity disorder	192/10,000 individuals	Weak
Bipolar disorder	184/10,000 individuals	Weak

<sup>a</sup> If the occurrences vary substantially between countries, we have given population-based occurrence measures from Denmark, 2000–2010.

<sup>b</sup> Prevalence according to [www.orpha.net](http://www.orpha.net).

<sup>c</sup> Prevalence among births in a population with prenatal screening and termination of pregnancy on demand. The prevalence is approximately 130/10,000 in an unscreened population, depending on parental age distribution.

<sup>d</sup> Lifetime prevalence according to Pedersen et al. (68).



# Age-related alterations in the genetics and genomics of the male germ line

Amin S. Herati, M.D.,<sup>a,b</sup> Boryana H. Zhelyazkova, B.A.,<sup>c</sup> Peter R. Butler, B.A.,<sup>a,b</sup> and Dolores J. Lamb, Ph.D.<sup>a,b,c</sup>

Fertility and Sterility® Vol. 107, No. 2, February 2017

## Offspring genetic conditions associated with advanced paternal age.

Condition	Paternal age (y)	Relative risk	Population risk	Adjusted risk
Achondroplasia	>50	7.8	1/15,000	1/1,923
Apert syndrome	>50	9.5	1/50,000	1/5,263
Pfeiffer syndrome	>50	6	1/100,000	1/16,666
Crouzon syndrome	>50	8	1/50,000	1/6,250
Neurofibromatosis I	>50	3.7	1/3,000–1/4,000	1/810–1/1,000
Retinoblastoma	>45	3	1/15,000–1/20,000	1/4,500–1/6,000
<b>Down syndrome</b>	<b>40–44</b>	<b>1.37</b>	<b>1/1,200<sup>a</sup></b>	<b>1/876<sup>a</sup></b>
Epilepsy	40–45	1.3	1/100	1/77.0
Breast cancer	>40	1.6	1/8.5	1/5.3
Childhood leukemia	>40	1.14	1/25,000	1/21,930
Childhood central nervous system tumor	>40	1.69	1/36,000	1/21,302

Note: Adapted with permission from Ramasamy et al. (10).

<sup>a</sup> Maternal age 20–29 years.

Herati. Paternal aging and the male germ line. Fertil Steril 2017.

# Old, older and too old: age limits for medically assisted fatherhood?

Andrea Mechanick Braverman, Ph.D.

Department of Obstetrics and Gynecology, Thomas Jefferson University, Philadelphia, Pennsylvania

Fertil Steril 2017;107:329–33

## Child's age at time of father's death.

Father's age at child's birth (y)	Father's expected age of death at time of child's birth (y)	Child's expected age at time of father's death (y)	Probability of father's death by child's age 5 (%)	Probability of father's death by child's age 10 (%)	Probability of father's death by child's age 15 (%)	Probability of father's death by child's age 20 (%)
20	76	56	0.74	1.45	2.19	3.10
25	77	52	0.71	1.46	2.38	3.77
30	77	47	0.75	1.69	3.08	5.17
35	77	42	0.94	2.34	4.45	7.56
40	78	38	1.42	3.54	6.69	10.91
45	78	33	2.16	5.34	9.63	15.69
50	79	29	3.26	7.63	13.83	22.19
55	80	25	4.52	10.93	19.57	31.46
60	81	21	6.71	15.76	28.21	44.91
65	82	17	9.7	23.05	40.94	61.72
70	84	14	14.79	34.60	57.61	79.02
75	85	10	23.25	50.26	75.38	91.98

Note: Source: Zweifel 2015 (6).

Braverman. Age limits for fatherhood. Fertil Steril 2016.

**OPEN**

## **Associations of parental age with offspring all-cause and cause-specific adult mortality**

David Carslake<sup>1,2\*</sup>, Per Tynelius<sup>3</sup>, Gerard J. van den Berg<sup>4</sup> & George Davey Smith<sup>1,2</sup>

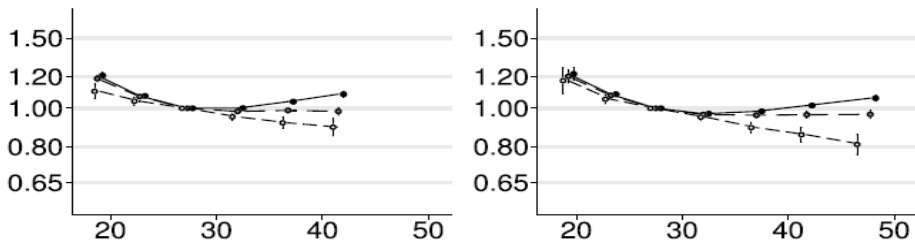
**Swedish registry data to examine all-cause and cause specific adult mortality (293,470 deaths among 5,204,433 people, followed up to a maximum of 80 years old) in relation to parental age.**



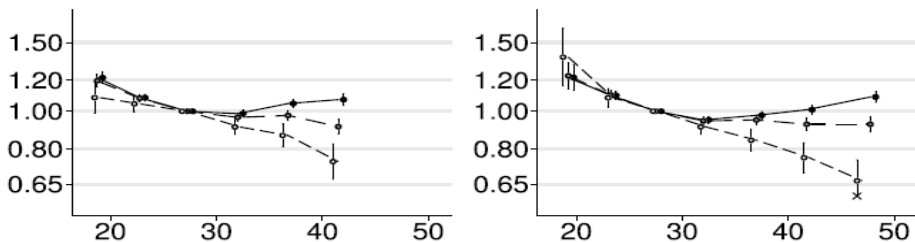
- Primary analysis, no adjustment
- - -●- - - Primary analysis, standard adjustment
- - -○- - - Sibling comparison, standard adjustment
- × Truncation of confidence interval

Hazard ratio (95% CI) relative to age 20-25

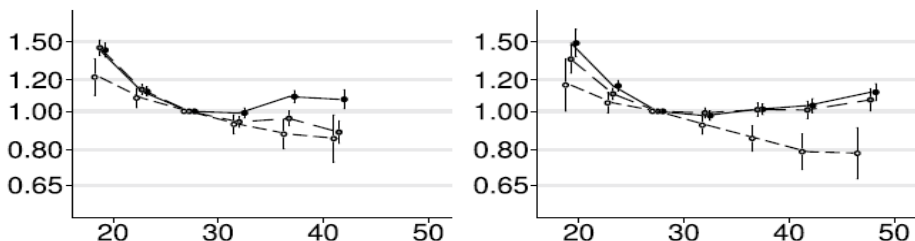
All-cause



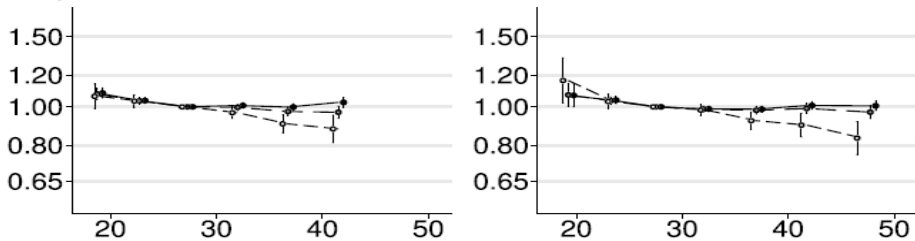
Cardiovascular diseases



External causes



Any-site cancer



Maternal age in years

Paternal age in years

Para as causas mais comuns de morte, a sobrevivência adulta foi melhorada na prole de pais mais velhos!!

# Idade paterna avançada: Devemos nos preocupar?

**SIM!**

## AULAS MINISTRADAS

2022 2021 2020 2019 2018 2017 2016 2015

<http://fertility.com.br/aulas-ministradas/>

# Obrigado!

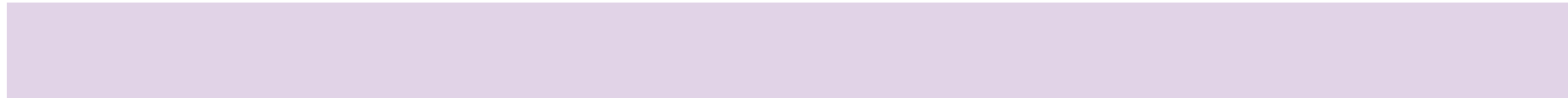
Dr. Edson Borges Jr.

[www.fertility.com.br](http://www.fertility.com.br)

E-mail: [edson@fertility.com.br](mailto:edson@fertility.com.br)



**FERTILITY**  
MEDICAL GROUP



**FERTILITY**