

Morphokinetic embryo behavior in low-prognosis patients according to the POSEIDON criteria: an analysis of 3326 injected oocytes

Amanda Setti, Daniela Paes de Almeida Ferreira Braga, Rodrigo Rosa Provenza, Patricia Guilherme, Assumpto Iaconelli Jr., Edson Borges Jr.

DISCLOSURE

- **I declare that I have no commercial or financial interests pertaining to the subject of this presentation or its content.**

Introduction

INTRODUCTION

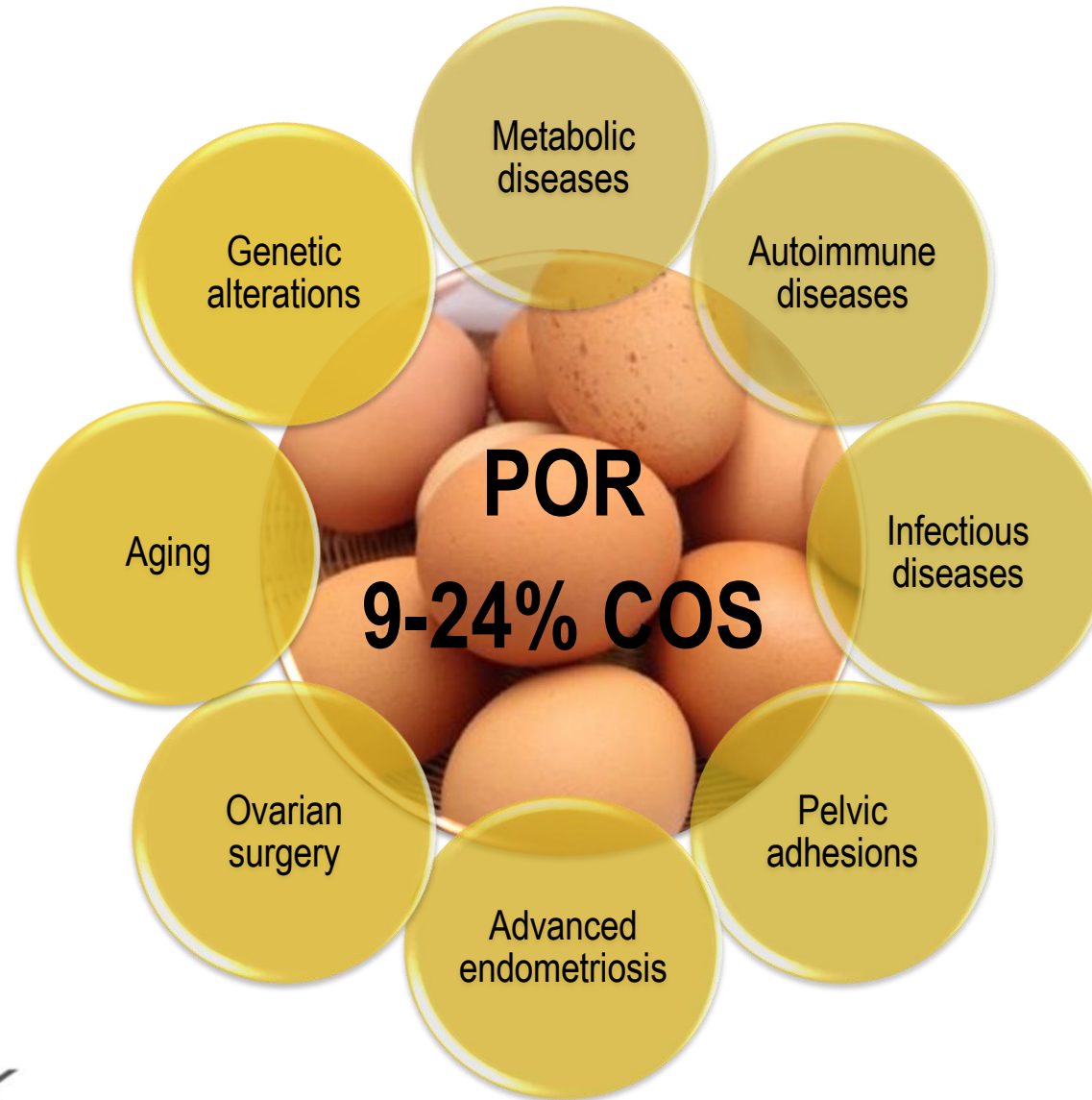
OBJECTIVE

MATERIAL AND
METHODS

RESULTS

CONCLUSION

Poor ovarian response (POR)



A new more detailed stratification of low responders to ovarian stimulation: from a poor ovarian response to a low prognosis concept

Poseidon Group (Patient-Oriented Strategies Encompassing Individualized Oocyte Number);

Carlo Alviggi¹, Claus Y Andersen², Klaus Buehler³, Alessandro Conforti¹, Giuseppe De Placido¹, Sandro C Esteves⁴, Robert Fischer⁵, Daniela Galliano⁶, Nikolaos P Polyzos⁷, Sesh K Sunkara⁸, Filippo M Ubaldi⁹, Peter Humaidan¹⁰

POSEIDON GROUP 1

Young patients <35 years with adequate ovarian reserve parameters (AFC \geq 5; AMH \geq 1.2 ng/ml) and with an unexpected poor or suboptimal ovarian response.

- Subgroup 1a: <4 oocytes*
- Subgroup 1b: 4-9 oocytes retrieved*

*after standard ovarian stimulation

POSEIDON GROUP 2

Older patients \geq 35 years with adequate ovarian reserve parameters (AFC \geq 5; AMH \geq 1.2 ng/ml) and with an unexpected poor or suboptimal ovarian response.

- Subgroup 2a: <4 oocytes*
- Subgroup 2b: 4-9 oocytes retrieved*

*after standard ovarian stimulation

POSEIDON GROUP 3

Young patients (<35 years) with poor ovarian reserve pre-stimulation parameters (AFC<5; AMH<1.2 ng/ml)

POSEIDON GROUP 4

Older patients (\geq 35 years) with poor ovarian reserve pre-stimulation parameters (AFC<5; AMH<1.2 ng/ml)

Hypothesis

POSEIDON
1

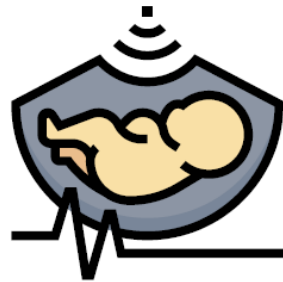
Distinct
reproductive
outcomes

Chinta et al., 2021; Leijdekkers et al., 2019

POSEIDON
2

POSEIDON
3

POSEIDON
4

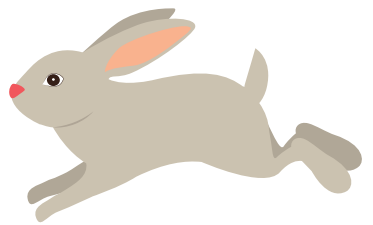
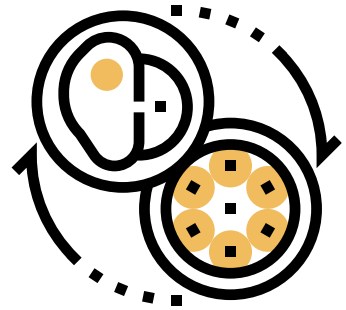
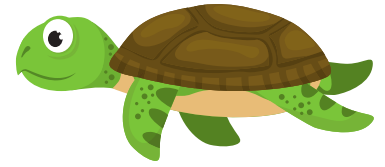
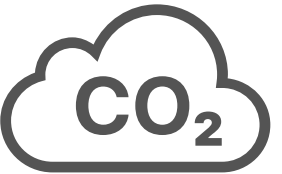
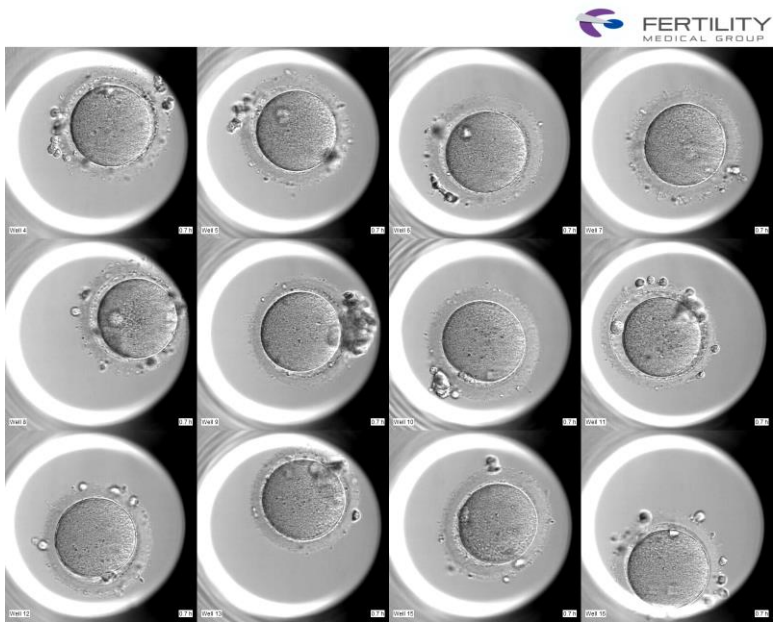
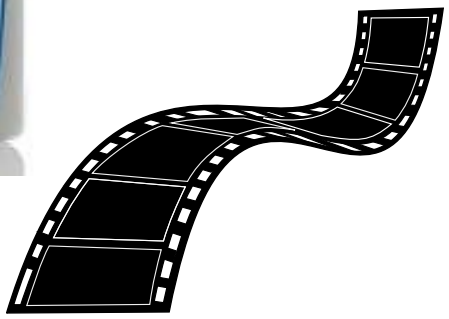


Groups 1-4



Patients categorized in different POSEIDON groups not only respond distinctly to COS, but also present with different oocyte and embryo qualities

Time-lapse imaging system



Objective

INTRODUCTION ✓

OBJECTIVE

MATERIAL AND
METHODS

RESULTS

CONCLUSION

To compare embryo quality, and speed and pattern of cell divisions in the four groups of POR as stratified by the POSEIDON criteria.

Material and methods

INTRODUCTION ✓

OBJECTIVE ✓

MATERIAL AND
METHODS

RESULTS

CONCLUSION

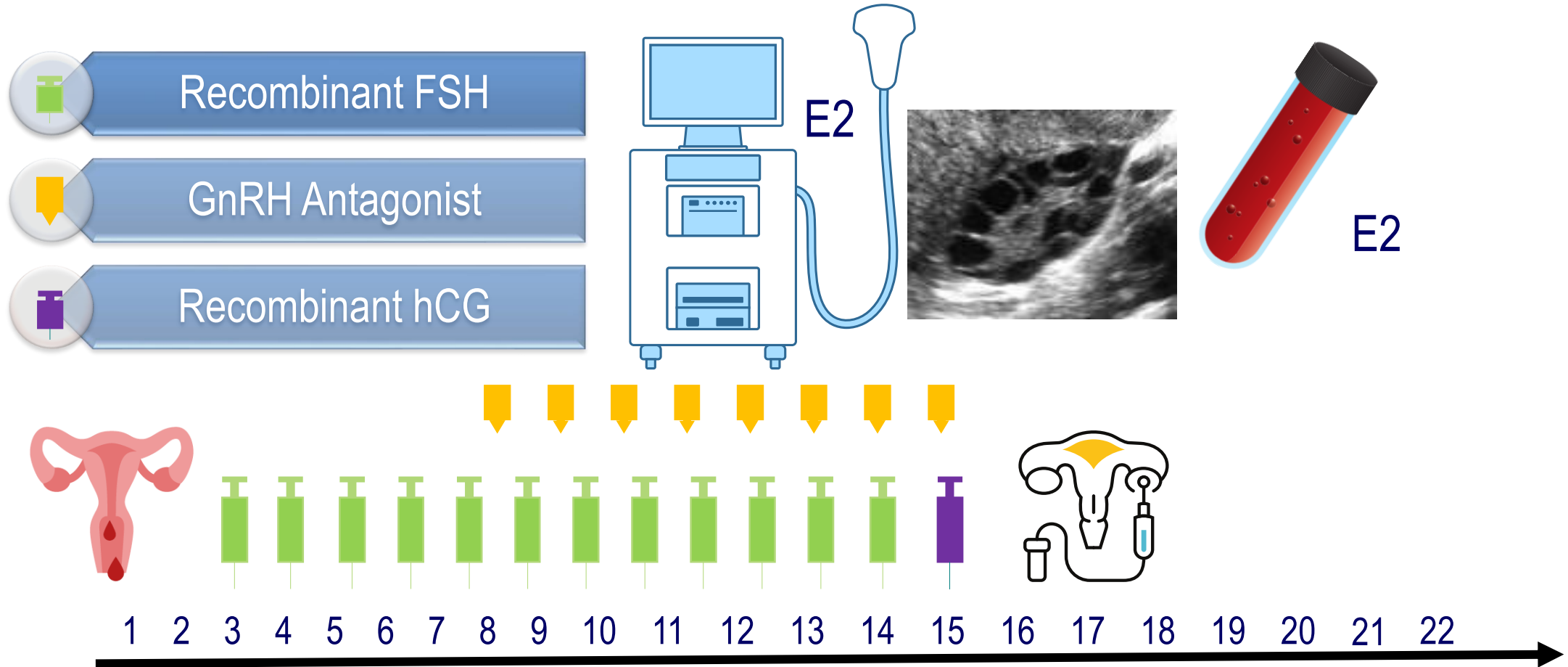
Design

Retrospective cohort study

Mar 2019 – Apr 2022

Morphokinetic events and ICSI clinical outcomes were compared among the groups.

Controlled ovarian stimulation



Embryo culture



Until day 5

11 focal planes

Every 10 minutes

One or two embryos transferred on D5



FERTILITY

Data analysis and statistics

Post hoc power analysis

Glimmpse

α 5%



GMM – Bonferroni
post hoc

GzLM – Bonferroni post hoc

1328
blastocysts

Effect
tB

Morphokinetic development

Clinical outcomes

Superior to 80%

Random effect

Single observation per couple –
no random effect

OR or Beta coefficient (B)

95% CI

p-values (5%)

Results

INTRODUCTION ✓

OBJECTIVE ✓

MATERIAL AND
METHODS ✓

RESULTS

CONCLUSION

Comparison of demographic data and cycles' characteristics among POSEIDON groups (n=846 cycles)

Variable	POSEIDON 1 (n=144)	POSEIDON 2 (n=570)	POSEIDON 3 (n=24)	POSEIDON 4 (n=128)	p-value
Female age (years)	33.5 ± 0.2 ^a	39.4 ± 0.1 ^b	33.5 ± 0.4 ^a	40.1 ± 0.2 ^c	<0.001
Male age (years)	36.6 ± 0.5 ^a	40.4 ± 0.2 ^{bc}	37.7 ± 1.2 ^{ab}	41.5 ± 0.6 ^c	<0.001
Female BMI (kg/m²)	24.0 ± 0.4 ^a	23.8 ± 0.8 ^a	24.4 ± 0.2 ^a	24.5 ± 0.3 ^a	0.654
Total dose of FSH	2377.6 ± 84.7 ^a	2807.0 ± 44.8 ^b	2221.9 ± 22.2 ^{ab}	2599.3 ± 101.9 ^{ab}	<0.001
Aspirated follicles (n)	9.2 ± 0.2 ^a	8.1 ± 0.1 ^b	6.4 ± 0.5 ^c	4.6 ± 0.2 ^d	<0.001
Retrieved oocytes (n)	6.0 ± 0.2 ^a	5.1 ± 0.1 ^b	4.7 ± 0.4 ^b	3.1 ± 0.2 ^c	<0.001
Mature oocytes (n)	4.5 ± 0.2 ^a	3.7 ± 0.1 ^b	4.0 ± 0.4 ^{ab}	2.2 ± 0.1 ^d	<0.001
Mature oocyte rate (%)	74.2 ± 2.0 ^a	73.1 ± 1.0 ^a	86.4 ± 2.0 ^a	72.4 ± 2.0 ^a	0.085
Fertilization rate (%)	72.2 ± 2.4 ^a	69.0 ± 1.2 ^{ab}	72.1 ± 2.8 ^a	53.9 ± 2.2 ^b	0.039
Blastocyst development (%)	48.6 ± 3.1 ^a	41.2 ± 1.5 ^b	37.0 ± 3.6 ^b	30.3 ± 3.2 ^b	0.035
Transferred embryos (n)	1.7 ± 0.2 ^a	1.6 ± 0.1 ^a	1.5 ± 0.6 ^a	1.6 ± 0.3 ^a	0.954

Note: Values are means ± standard error, unless otherwise noted. Different letters within the same line represent statistically significant differences.

Comparison of morphokinetic parameters among the POSEIDON groups (n=846 cycles and 3326 injected oocytes)

Variables (h)	POSEIDON 1 (n= 660 embryos)	POSEIDON 2 (n= 2206 embryos)	POSEIDON 3 (n= 86 embryos)	POSEIDON 4 (n= 374 embryos)	p-value
tPNa					
tPNf					
t2					
t3					
t4					
t5					
t6					
t7					
t8					
tM					
tsB					
tB					

Note: Values are means \pm standard error, unless otherwise noted. tPNa – timing to pronuclei appearance, tPNf – timing to pronuclei fading, t2 – timing to two cells, t3 – timing to three cells, t4 – timing to four cells, t5 – timing to five cells, t6 – timing to six cells, t7 – timing to seven cells, t8 – timing to eight cells, tsB – timing to start blastulation, tB – timing to blastulation. Different letters within the same line represent statistically significant differences.

Comparison of morphokinetic parameters among the POSEIDON groups (n=846 cycles and 3326 injected oocytes)

Variables (h)	POSEIDON 1 (n= 660 embryos)	POSEIDON 2 (n= 2206 embryos)	POSEIDON 3 (n= 86 embryos)	POSEIDON 4 (n= 374 embryos)	p-value
cc2	11.1 ± 0.2 ^a	11.0 ± 0.1 ^a	11.0 ± 0.2 ^a		0.018
cc3	12.9 ± 0.3 ^a	13.1 ± 0.1 ^a	13.7 ± 0.7 ^a		0.559
s1	2.7 ± 0.1 ^a	3.0 ± 0.1 ^a	2.5 ± 0.3 ^a		0.082
s2	1.6 ± 0.2 ^a	2.4 ± 0.1 ^b	2.6 ± 0.5 ^{ab}		0.002
s3	9.2 ± 0.4 ^a	10.1 ± 0.2 ^{ab}	11.3 ± 1.1 ^{ab}		0.012

Note: Values are means ± standard error, unless otherwise noted. s1 – timing to complete t2-tPNf synchronous divisions, s2 – timing to complete t4-t3 synchronous divisions, s3 – timing to complete t8-t5 synchronous divisions, cc2 – duration of the second cell cycle (t3-t2), cc3 – duration of third cell cycle (t5-t3). Different letters within the same line represent statistically significant differences.

Comparison of intracytoplasmic sperm injection (ICSI) clinical outcomes among POSEIDON groups (n=846 cycles)

Variable	POSEIDON 1 (n=144)	POSEIDON 2 (n=570)	POSEIDON 3 (n=24)	POSEIDON 4 (n=128)	p value
Implantation rate (%)	26.9 ± 0.7 ^a	22.4 ± 0.4 ^b	20.0 ± 1.0 ^{ab}	14.0 ± 0.7 ^b	<0.001

Note: Values are means ± standard error, unless otherwise noted. Different letters within the same line represent statistically significant differences.

Conclusion

INTRODUCTION ✓

OBJECTIVE ✓

MATERIAL AND
METHODS ✓

RESULTS ✓

CONCLUSION

✓ Embryo quality and morphokinetic behavior differed across the POSEIDON groups, being more favorable in POSEIDON group 1, as well as implantation, clinical pregnancy, and miscarriage rates.

✓ Embryo development was more favorable in POSEIDON group 1 (young age and adequate ovarian reserve), suggesting that oocyte quality is determinant of embryo developmental potential.

✓ These findings show the reasonability of stratifying POR by the POSEIDON criteria and provide information for the appropriate counselling of POR regarding their possible prognosis.

STAFF



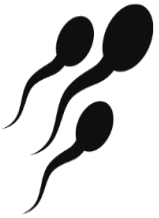
Clinical board

Assumpto Iaconelli Jr.
Edson Borges Jr.



IVF lab

Kelly C. Pinheiro
Livia Silvia Vingris
Patrícia Guilherme
Tatiana Nunes de Melo



Andrology lab

Rodrigo Rosa Provenza

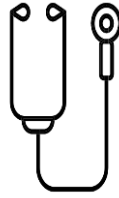


Education and research

Amanda Setti
Christina Morishima
Daniela Braga
Joana Nogueres Simas



FERTILITY



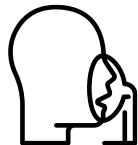
Clinical body

Barbara Brigati
Carla Iaconelli
Edward Carrilho
Fernanda Montenegro
Graziela C. C. Carvalho
Mario Firmino
Mauro Bibancos
Natalia G. Tannous
Paula Ferreiro Vieira
Rosane S. Rodrigues



Psychology

Rose M. Melamed



Anesthesiology

Marcelo Torres



Nutrition

Gabriela Halpern



Information technology

Marcelo Alexandre Baptista



Nursing

Larissa Rodrigues Gonçalves
Maria Regina S. da Silva
Rosieli Patricia A. da Silva
Vera Lucia Alves
Ariele Raiane B. Araujo
Gabriela Lima Almeida
Stefany N. Coelho



Pharmacy

Maria das N. Fernandes



Administration

Margaret Meira
Fabiana Garcia



Support

Edson Pinheiro Ribeiro
Janaína Gomes Pinho da Silva
Katia Rodrigues
Lucácio de Souza Anjos
Marcos Vinícius de Sousa
Simone de S. Carvalho
Leonardo S. Lopes